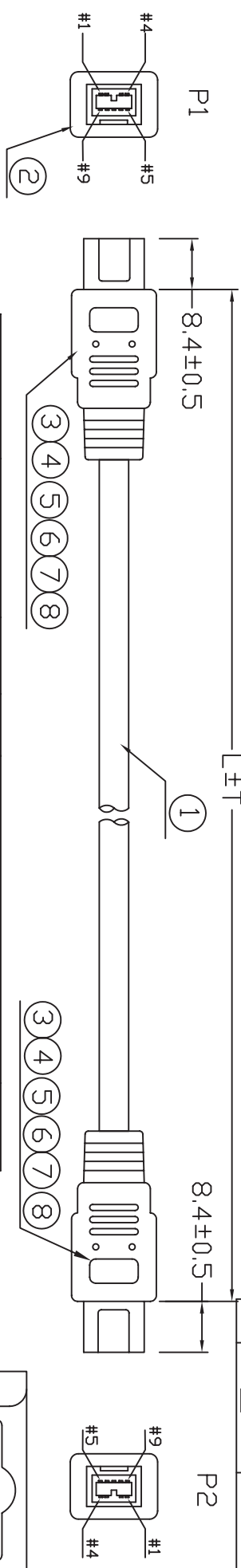
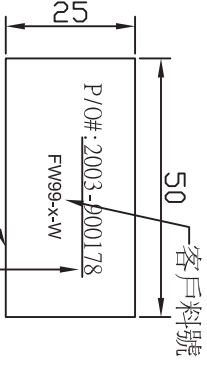


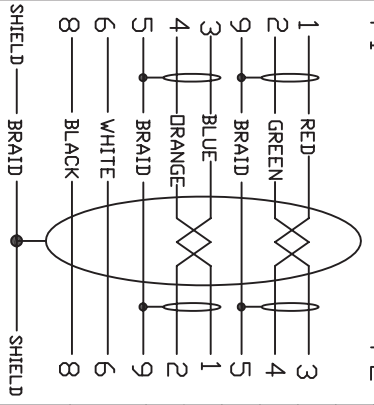
REV	DESC	DATE	ECN NO.
B		09.08.04	N20907243
C		10.05.21	N21005150



CUSTOMER P/N	Y-S P/N	LTT	M	紙卡<客供>	TIE-A-WH
FW99-03-W	IE1394100102292	300±20	0.3	紙卡<FW99-03-W><帶條碼><客供>	
FW99-05-W	IE1394100202292	500±20	0.5	紙卡<FW99-05-W><帶條碼><客供>	100*1
FW99-1-W	IE1394100302292	1000±30	1.0	紙卡<FW99-1-W><帶條碼><客供>	100*1
FW99-2-W	IE1394100402292	2000±30	2.0	紙卡<FW99-2-W><帶條碼><客供>	120*1
FW99-3-W	IE1394100502292	3000±50	3.0	紙卡<FW99-3-W><帶條碼><客供>	130*1
FW99-4-W	IE1394100602292	4500±50	4.5	紙卡<FW99-4-W><帶條碼><客供>	PE FLIM

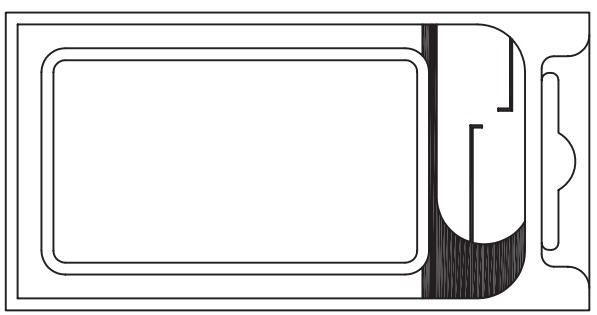


PIN ASSIGNMENT



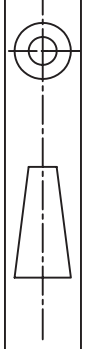
*	32002000006	CARTON:P:44*28*0.3 CM<材質: B3C>	A/R	PCS
*		紙卡:XXXX<帶條碼><客供>	1	PCS
*	ZZZC12700016	真空盒(M)<客供>	1	PCS
*	330010008999	LABEL:50*25MM(內容如上圖所示) (白底黑字)(貼紙箱兩側腰右上角)	2/R	PCS
*	32012000021	棉紙:230*850MM	4/R	PCS
*	390	CARTON:46*30*25CM	1/XX	PCS
*	390	PE BAG:30*28*0.08MM	1/XX	PCS
*	390	TIE-A/WHITE	80*1	MM
	370	TUBE-HT-φ3.0MM	6*4	MM
	370	PVC-WH39/50	20	G
	370	HI TEAMP TAPE:W:8MM;	40*4	MM
	370	HI-TEAMP-TAPE W:6MM	35*2	MM
	210	TUBE-HT-φ0.8MM	10*4	MM
	370	FDL-AL-6MM	35*2	MM
	110111209007	IE1394b-9P<BK><MOL DING TYPE> (NICKEL TINNED)(Re to)<才聖>	2	SET
	1308066390001	UL20276,(1P+ADM)*2+2C+ABW, WH39,DD:5,2(30/26)	L	M

ROHS COMPLIANT



NOTE  
1. REF: IE13941-02020  
2. 有打樣!

INNER MOLDING	OUTER MOLDING
	IEEE-1394-048



DRAWN BY: 劉坤	SCALE: NONE	ITEM: IE1394100XX2292	REV: D
CHECKED BY:	CUSTOMER: C127	DATE: 2009-07-01	
APPROVER BY:	CUSTOMER P/N: FW99-x-W	PAGE: 1/1	
ALL DIMENSIONS IN mm (UNLESS OTHERWISE SPECIFIED)			