



Test Report

Report No. A2220469647102

Page 1 of 32

Company Name YUNG LI CO.,LTD

shown on Report
Address DA PU INDUSTRIAL ZONE,GANG ZI,CHANG PING TOWN, DONG GUAN CITY,GUANG DONG 523571 CHINA

The following sample(s) and sample information was/were submitted and identified by/on the behalf of the applicant

| Sample No. | Sample Name(s) | Material |
|------------|----------------|-----------------|
| 001 | POWER CORD | PVC BLACK |
| 002 | | PVC WHITE |
| 003 | | PVC BROWN |
| 004 | | PVC BLUE |
| 005 | | PVC YELLOW |
| 006 | | PVC GREEN |
| 007 | | PVC RED |
| 008 | | PVC ORANGE |
| 009 | | PVC PURPLE |
| 010 | | PVC PINK |
| 011 | | INK |
| 012 | | CABLE COPPER |
| 013 | | INNERBODY |
| 014 | | COPPER ALLOY |
| 015 | | TERMINAL COPPER |

Sample Received Date

Oct. 21, 2022

Testing Period

Oct. 21, 2022 to Oct. 26, 2022

Test Requested

As specified by client, to test Lead (Pb), Cadmium (Cd), Mercury (Hg), Hexavalent Chromium (Cr(VI)), Polybrominated Biphenyls (PBBs), Polybrominated Diphenyl Ethers (PBDEs), Phthalates (DBP, BBP, DEHP, DIBP), Perfluorooctane Sulfonates(PFOS), Phthalates,Polycyclic Aromatic Hydrocarbons (PAHs), Tetrabromobisphenol A (TBBP-A), Red phosphorus in the submitted sample(s).

Test Method/Test Result(s)

Please refer to the following page(s).

Tested by



Reviewed by



Approved by



Date

Oct. 26, 2022

Helen Liu

Lab Authorized Signatory

No. M554691381



Centre Testing International Group Co.,Ltd.

CTI Building, Xing Dong Community, Xin'an Sub-district, Bao'an District, Shenzhen City, Guangdong Province, P.R. China

Test Report

Report No. A2220469647102

Page 2 of 32

Test Method

| Tested Item(s) | Test Method | Measured Equipment(s) |
|---|---|-----------------------|
| Lead (Pb) | IEC 62321-5:2013 | ICP-OES |
| Cadmium (Cd) | IEC 62321-5:2013 | ICP-OES |
| Mercury (Hg) | IEC 62321-4:2013+AMD1:2017 CSV | ICP-OES |
| Hexavalent Chromium (Cr(VI)) | IEC 62321-7-1:2015 | UV-Vis |
| | IEC 62321-7-2:2017 and/or determination of Total Chromium by IEC 62321-5:2013 | UV-Vis/ICP-OES |
| Polybrominated Biphenyls (PBBs) | IEC 62321-6:2015 | GC-MS |
| Polybrominated Diphenyl Ethers (PBDEs) | IEC 62321-6:2015 | GC-MS |
| Phthalates (DBP, BBP, DEHP, DIBP) | IEC 62321-8:2017 | GC-MS |
| Perfluorooctane Sulfonates(PFOS) | Refer to US EPA 3550C:2007 & US EPA 8321B:2007 | LC-MS-MS |
| Phthalates | Refer to EN 14372:2004(E) | GC-MS |
| Red phosphorus | Refer to GB/T 9722-2006 | PY-GC-MS |
| Polycyclic Aromatic Hydrocarbons (PAHs) | AfPS GS 2019:01 PAK | GC-MS |
| Tetrabromobisphenol A (TBBP-A) | Refer to US EPA 3550C:2007 & US EPA 8270E:2018 | GC-MS |

Test Report

Report No. A2220469647102

Page 3 of 32

Test Result(s)

| Tested Item(s) | Result | | | MDL |
|------------------------------|--------|------|------|-------------------------------|
| | 001 | 002 | 003 | |
| Lead (Pb) | N.D. | N.D. | N.D. | 2 mg/kg |
| Cadmium (Cd) | N.D. | N.D. | N.D. | 2 mg/kg |
| Mercury (Hg) | N.D. | N.D. | N.D. | 2 mg/kg |
| Hexavalent Chromium (Cr(VI)) | N.D. | N.D. | N.D. | 8 mg/kg |
| | -- | -- | -- | 0.10 µg/cm ² (LOQ) |

| Tested Item(s) | Result | | | MDL |
|------------------------------|--------|------|------|-------------------------------|
| | 004 | 005 | 006 | |
| Lead (Pb) | N.D. | N.D. | N.D. | 2 mg/kg |
| Cadmium (Cd) | N.D. | N.D. | N.D. | 2 mg/kg |
| Mercury (Hg) | N.D. | N.D. | N.D. | 2 mg/kg |
| Hexavalent Chromium (Cr(VI)) | N.D. | N.D. | N.D. | 8 mg/kg |
| | -- | -- | -- | 0.10 µg/cm ² (LOQ) |

| Tested Item(s) | Result | | | MDL |
|------------------------------|--------|------|------|-------------------------------|
| | 007 | 008 | 009 | |
| Lead (Pb) | N.D. | N.D. | N.D. | 2 mg/kg |
| Cadmium (Cd) | N.D. | N.D. | N.D. | 2 mg/kg |
| Mercury (Hg) | N.D. | N.D. | N.D. | 2 mg/kg |
| Hexavalent Chromium (Cr(VI)) | N.D. | N.D. | N.D. | 8 mg/kg |
| | -- | -- | -- | 0.10 µg/cm ² (LOQ) |

| Tested Item(s) | Result | | | MDL |
|------------------------------|--------|------|-------|-------------------------------|
| | 010 | 011 | 012 | |
| Lead (Pb) | N.D. | N.D. | N.D. | 2 mg/kg |
| Cadmium (Cd) | N.D. | N.D. | N.D. | 2 mg/kg |
| Mercury (Hg) | N.D. | N.D. | N.D. | 2 mg/kg |
| Hexavalent Chromium (Cr(VI)) | N.D. | N.D. | -- | 8 mg/kg |
| | -- | -- | N.D.▼ | 0.10 µg/cm ² (LOQ) |

Test Report

Report No. A2220469647102

Page 4 of 32

| Tested Item(s) | Result | | | MDL |
|------------------------------|--------|-----------|----------|-------------------------------|
| | 013 | 014 | 015 | |
| Lead (Pb) | N.D. | 126 mg/kg | 40 mg/kg | 2 mg/kg |
| Cadmium (Cd) | N.D. | N.D. | N.D. | 2 mg/kg |
| Mercury (Hg) | N.D. | N.D. | N.D. | 2 mg/kg |
| Hexavalent Chromium (Cr(VI)) | N.D. | -- | -- | 8 mg/kg |
| | -- | N.D.▼ | N.D.▼ | 0.10 µg/cm ² (LOQ) |

| Tested Item(s) | Result | | | MDL |
|--|--------|------|------|---------|
| | 001 | 002 | 003 | |
| Polybrominated Biphenyls (PBBs) | | | | |
| Monobromobiphenyl | N.D. | N.D. | N.D. | 5 mg/kg |
| Dibromobiphenyl | N.D. | N.D. | N.D. | 5 mg/kg |
| Tribromobiphenyl | N.D. | N.D. | N.D. | 5 mg/kg |
| Tetrabromobiphenyl | N.D. | N.D. | N.D. | 5 mg/kg |
| Pentabromobiphenyl | N.D. | N.D. | N.D. | 5 mg/kg |
| Hexabromobiphenyl | N.D. | N.D. | N.D. | 5 mg/kg |
| Heptabromobiphenyl | N.D. | N.D. | N.D. | 5 mg/kg |
| Octabromobiphenyl | N.D. | N.D. | N.D. | 5 mg/kg |
| Nonabromobiphenyl | N.D. | N.D. | N.D. | 5 mg/kg |
| Decabromobiphenyl | N.D. | N.D. | N.D. | 5 mg/kg |

| Tested Item(s) | Result | | | MDL |
|--|--------|------|------|---------|
| | 004 | 005 | 006 | |
| Polybrominated Biphenyls (PBBs) | | | | |
| Monobromobiphenyl | N.D. | N.D. | N.D. | 5 mg/kg |
| Dibromobiphenyl | N.D. | N.D. | N.D. | 5 mg/kg |
| Tribromobiphenyl | N.D. | N.D. | N.D. | 5 mg/kg |
| Tetrabromobiphenyl | N.D. | N.D. | N.D. | 5 mg/kg |
| Pentabromobiphenyl | N.D. | N.D. | N.D. | 5 mg/kg |
| Hexabromobiphenyl | N.D. | N.D. | N.D. | 5 mg/kg |
| Heptabromobiphenyl | N.D. | N.D. | N.D. | 5 mg/kg |
| Octabromobiphenyl | N.D. | N.D. | N.D. | 5 mg/kg |
| Nonabromobiphenyl | N.D. | N.D. | N.D. | 5 mg/kg |
| Decabromobiphenyl | N.D. | N.D. | N.D. | 5 mg/kg |

Test Report

Report No. A2220469647102

Page 5 of 32

| Tested Item(s) | Result | | | MDL |
|--|--------|------|------|---------|
| | 007 | 008 | 009 | |
| Polybrominated Biphenyls (PBBs) | | | | |
| Monobromobiphenyl | N.D. | N.D. | N.D. | 5 mg/kg |
| Dibromobiphenyl | N.D. | N.D. | N.D. | 5 mg/kg |
| Tribromobiphenyl | N.D. | N.D. | N.D. | 5 mg/kg |
| Tetrabromobiphenyl | N.D. | N.D. | N.D. | 5 mg/kg |
| Pentabromobiphenyl | N.D. | N.D. | N.D. | 5 mg/kg |
| Hexabromobiphenyl | N.D. | N.D. | N.D. | 5 mg/kg |
| Heptabromobiphenyl | N.D. | N.D. | N.D. | 5 mg/kg |
| Octabromobiphenyl | N.D. | N.D. | N.D. | 5 mg/kg |
| Nonabromobiphenyl | N.D. | N.D. | N.D. | 5 mg/kg |
| Decabromobiphenyl | N.D. | N.D. | N.D. | 5 mg/kg |

| Tested Item(s) | Result | | | MDL |
|--|--------|------|------|---------|
| | 010 | 011 | 013 | |
| Polybrominated Biphenyls (PBBs) | | | | |
| Monobromobiphenyl | N.D. | N.D. | N.D. | 5 mg/kg |
| Dibromobiphenyl | N.D. | N.D. | N.D. | 5 mg/kg |
| Tribromobiphenyl | N.D. | N.D. | N.D. | 5 mg/kg |
| Tetrabromobiphenyl | N.D. | N.D. | N.D. | 5 mg/kg |
| Pentabromobiphenyl | N.D. | N.D. | N.D. | 5 mg/kg |
| Hexabromobiphenyl | N.D. | N.D. | N.D. | 5 mg/kg |
| Heptabromobiphenyl | N.D. | N.D. | N.D. | 5 mg/kg |
| Octabromobiphenyl | N.D. | N.D. | N.D. | 5 mg/kg |
| Nonabromobiphenyl | N.D. | N.D. | N.D. | 5 mg/kg |
| Decabromobiphenyl | N.D. | N.D. | N.D. | 5 mg/kg |

Test Report

Report No. A2220469647102

Page 6 of 32

| Tested Item(s) | Result | | | MDL |
|---|--------|------|------|---------|
| | 001 | 002 | 003 | |
| Polybrominated Diphenyl Ethers (PBDEs) | | | | |
| Monobromodiphenyl ether | N.D. | N.D. | N.D. | 5 mg/kg |
| Dibromodiphenyl ether | N.D. | N.D. | N.D. | 5 mg/kg |
| Tribromodiphenyl ether | N.D. | N.D. | N.D. | 5 mg/kg |
| Tetrabromodiphenyl ether | N.D. | N.D. | N.D. | 5 mg/kg |
| Pentabromodiphenyl ether | N.D. | N.D. | N.D. | 5 mg/kg |
| Hexabromodiphenyl ether | N.D. | N.D. | N.D. | 5 mg/kg |
| Heptabromodiphenyl ether | N.D. | N.D. | N.D. | 5 mg/kg |
| Octabromodiphenyl ether | N.D. | N.D. | N.D. | 5 mg/kg |
| Nonabromodiphenyl ether | N.D. | N.D. | N.D. | 5 mg/kg |
| Decabromodiphenyl ether | N.D. | N.D. | N.D. | 5 mg/kg |

| Tested Item(s) | Result | | | MDL |
|---|--------|------|------|---------|
| | 004 | 005 | 006 | |
| Polybrominated Diphenyl Ethers (PBDEs) | | | | |
| Monobromodiphenyl ether | N.D. | N.D. | N.D. | 5 mg/kg |
| Dibromodiphenyl ether | N.D. | N.D. | N.D. | 5 mg/kg |
| Tribromodiphenyl ether | N.D. | N.D. | N.D. | 5 mg/kg |
| Tetrabromodiphenyl ether | N.D. | N.D. | N.D. | 5 mg/kg |
| Pentabromodiphenyl ether | N.D. | N.D. | N.D. | 5 mg/kg |
| Hexabromodiphenyl ether | N.D. | N.D. | N.D. | 5 mg/kg |
| Heptabromodiphenyl ether | N.D. | N.D. | N.D. | 5 mg/kg |
| Octabromodiphenyl ether | N.D. | N.D. | N.D. | 5 mg/kg |
| Nonabromodiphenyl ether | N.D. | N.D. | N.D. | 5 mg/kg |
| Decabromodiphenyl ether | N.D. | N.D. | N.D. | 5 mg/kg |

Test Report

Report No. A2220469647102

Page 7 of 32

| Tested Item(s) | Result | | | MDL |
|---|--------|------|------|---------|
| | 007 | 008 | 009 | |
| Polybrominated Diphenyl Ethers (PBDEs) | | | | |
| Monobromodiphenyl ether | N.D. | N.D. | N.D. | 5 mg/kg |
| Dibromodiphenyl ether | N.D. | N.D. | N.D. | 5 mg/kg |
| Tribromodiphenyl ether | N.D. | N.D. | N.D. | 5 mg/kg |
| Tetrabromodiphenyl ether | N.D. | N.D. | N.D. | 5 mg/kg |
| Pentabromodiphenyl ether | N.D. | N.D. | N.D. | 5 mg/kg |
| Hexabromodiphenyl ether | N.D. | N.D. | N.D. | 5 mg/kg |
| Heptabromodiphenyl ether | N.D. | N.D. | N.D. | 5 mg/kg |
| Octabromodiphenyl ether | N.D. | N.D. | N.D. | 5 mg/kg |
| Nonabromodiphenyl ether | N.D. | N.D. | N.D. | 5 mg/kg |
| Decabromodiphenyl ether | N.D. | N.D. | N.D. | 5 mg/kg |

| Tested Item(s) | Result | | | MDL |
|---|--------|------|------|---------|
| | 010 | 011 | 013 | |
| Polybrominated Diphenyl Ethers (PBDEs) | | | | |
| Monobromodiphenyl ether | N.D. | N.D. | N.D. | 5 mg/kg |
| Dibromodiphenyl ether | N.D. | N.D. | N.D. | 5 mg/kg |
| Tribromodiphenyl ether | N.D. | N.D. | N.D. | 5 mg/kg |
| Tetrabromodiphenyl ether | N.D. | N.D. | N.D. | 5 mg/kg |
| Pentabromodiphenyl ether | N.D. | N.D. | N.D. | 5 mg/kg |
| Hexabromodiphenyl ether | N.D. | N.D. | N.D. | 5 mg/kg |
| Heptabromodiphenyl ether | N.D. | N.D. | N.D. | 5 mg/kg |
| Octabromodiphenyl ether | N.D. | N.D. | N.D. | 5 mg/kg |
| Nonabromodiphenyl ether | N.D. | N.D. | N.D. | 5 mg/kg |
| Decabromodiphenyl ether | N.D. | N.D. | N.D. | 5 mg/kg |

Test Report

Report No. A2220469647102

Page 8 of 32

| Tested Item(s) | Result | | | MDL |
|---|--------|------|------|----------|
| | 001 | 002 | 003 | |
| Phthalates (DBP, BBP, DEHP, DIBP) | | | | |
| Dibutyl phthalate (DBP) CAS#:84-74-2 | N.D. | N.D. | N.D. | 50 mg/kg |
| Butyl benzyl phthalate (BBP) CAS#:85-68-7 | N.D. | N.D. | N.D. | 50 mg/kg |
| Di-(2-ethylhexyl) phthalate (DEHP) CAS#:117-81-7 | N.D. | N.D. | N.D. | 50 mg/kg |
| Diisobutyl phthalate (DIBP) CAS#:84-69-5 | N.D. | N.D. | N.D. | 50 mg/kg |

| Tested Item(s) | Result | | | MDL |
|---|--------|------|------|----------|
| | 004 | 005 | 006 | |
| Phthalates (DBP, BBP, DEHP, DIBP) | | | | |
| Dibutyl phthalate (DBP) CAS#:84-74-2 | N.D. | N.D. | N.D. | 50 mg/kg |
| Butyl benzyl phthalate (BBP) CAS#:85-68-7 | N.D. | N.D. | N.D. | 50 mg/kg |
| Di-(2-ethylhexyl) phthalate (DEHP) CAS#:117-81-7 | N.D. | N.D. | N.D. | 50 mg/kg |
| Diisobutyl phthalate (DIBP) CAS#:84-69-5 | N.D. | N.D. | N.D. | 50 mg/kg |

| Tested Item(s) | Result | | | MDL |
|---|--------|------|------|----------|
| | 007 | 008 | 009 | |
| Phthalates (DBP, BBP, DEHP, DIBP) | | | | |
| Dibutyl phthalate (DBP) CAS#:84-74-2 | N.D. | N.D. | N.D. | 50 mg/kg |
| Butyl benzyl phthalate (BBP) CAS#:85-68-7 | N.D. | N.D. | N.D. | 50 mg/kg |
| Di-(2-ethylhexyl) phthalate (DEHP) CAS#:117-81-7 | N.D. | N.D. | N.D. | 50 mg/kg |
| Diisobutyl phthalate (DIBP) CAS#:84-69-5 | N.D. | N.D. | N.D. | 50 mg/kg |

Test Report

Report No. A2220469647102

Page 9 of 32

| Tested Item(s) | Result | | | MDL |
|---|--------|------|------|----------|
| | 010 | 011 | 013 | |
| Phthalates (DBP, BBP, DEHP, DIBP) | | | | |
| Dibutyl phthalate (DBP) CAS#:84-74-2 | N.D. | N.D. | N.D. | 50 mg/kg |
| Butyl benzyl phthalate (BBP) CAS#:85-68-7 | N.D. | N.D. | N.D. | 50 mg/kg |
| Di-(2-ethylhexyl) phthalate (DEHP) CAS#:117-81-7 | N.D. | N.D. | N.D. | 50 mg/kg |
| Diisobutyl phthalate (DIBP) CAS#:84-69-5 | N.D. | N.D. | N.D. | 50 mg/kg |

| Tested Item(s) | Result | | | MDL |
|--------------------------------------|--------|------|------|-------------|
| | 001 | 002 | 003 | |
| Perfluorooctane Sulfonates (PFOS) | N.D. | N.D. | N.D. | 0.010 mg/kg |

| Tested Item(s) | Result | | | MDL |
|--------------------------------------|--------|------|------|-------------|
| | 004 | 005 | 006 | |
| Perfluorooctane Sulfonates (PFOS) | N.D. | N.D. | N.D. | 0.010 mg/kg |

| Tested Item(s) | Result | | | MDL |
|--------------------------------------|--------|------|------|-------------|
| | 007 | 008 | 009 | |
| Perfluorooctane Sulfonates (PFOS) | N.D. | N.D. | N.D. | 0.010 mg/kg |

| Tested Item(s) | Result | | | MDL |
|--------------------------------------|--------|------|------|-------------|
| | 010 | 011 | 013 | |
| Perfluorooctane Sulfonates (PFOS) | N.D. | N.D. | N.D. | 0.010 mg/kg |

Test Report

Report No. A2220469647102

Page 10 of 32

| Tested Item(s) | Result | | | MDL |
|---|--------|------|------|----------|
| | 001 | 002 | 003 | |
| Phthalates | | | | |
| Dibutyl phthalate (DBP) CAS#:84-74-2 | N.D. | N.D. | N.D. | 30 mg/kg |
| Butyl benzyl phthalate (BBP) CAS#:85-68-7 | N.D. | N.D. | N.D. | 30 mg/kg |
| Di-(2-ethylhexyl) phthalate (DEHP) CAS#:117-81-7 | N.D. | N.D. | N.D. | 30 mg/kg |
| Di-n-octyl phthalate (DNOP) CAS#:117-84-0 | N.D. | N.D. | N.D. | 30 mg/kg |
| Di-isononyl phthalate (DINP) CAS#:28553-12-0,68515-48-0 | N.D. | N.D. | N.D. | 50 mg/kg |
| Di-iso-decyl phthalate (DIDP) CAS#:26761-40-0,68515-49-1 | N.D. | N.D. | N.D. | 50 mg/kg |
| Dimethyl phthalate (DMP) CAS#:131-11-3 | N.D. | N.D. | N.D. | 30 mg/kg |
| Diethyl phthalate (DEP) CAS#:84-66-2 | N.D. | N.D. | N.D. | 30 mg/kg |
| Dipropyl phthalate (DPrP) CAS#:131-16-8 | N.D. | N.D. | N.D. | 30 mg/kg |
| Diisobutyl phthalate (DIBP) CAS#:84-69-5 | N.D. | N.D. | N.D. | 30 mg/kg |
| Dipentyl phthalate (DPP/DPENP) CAS#:131-18-0 | N.D. | N.D. | N.D. | 30 mg/kg |
| Diheptyl phthalate (DHP) CAS#:3648-21-3 | N.D. | N.D. | N.D. | 30 mg/kg |
| Dicyclohexyl phthalate (DCHP) CAS#:84-61-7 | N.D. | N.D. | N.D. | 30 mg/kg |
| Diisooctyl phthalate (DIOP) CAS#:27554-26-3 | N.D. | N.D. | N.D. | 50 mg/kg |
| Dinonyl phthalate (DNP) CAS#:84-76-4 | N.D. | N.D. | N.D. | 30 mg/kg |
| Diisononyl adipate (DINA) CAS#:33703-08-1 | N.D. | N.D. | N.D. | 50 mg/kg |

Test Report

Report No. A2220469647102

Page 11 of 32

| Tested Item(s) | Result | | | MDL |
|---|--------|------|------|----------|
| | 004 | 005 | 006 | |
| Phthalates | | | | |
| Dibutyl phthalate (DBP) CAS#:84-74-2 | N.D. | N.D. | N.D. | 30 mg/kg |
| Butyl benzyl phthalate (BBP) CAS#:85-68-7 | N.D. | N.D. | N.D. | 30 mg/kg |
| Di-(2-ethylhexyl) phthalate (DEHP) CAS#:117-81-7 | N.D. | N.D. | N.D. | 30 mg/kg |
| Di-n-octyl phthalate (DNOP) CAS#:117-84-0 | N.D. | N.D. | N.D. | 30 mg/kg |
| Di-isononyl phthalate (DINP) CAS#:28553-12-0,68515-48-0 | N.D. | N.D. | N.D. | 50 mg/kg |
| Di-iso-decyl phthalate (DIDP) CAS#:26761-40-0,68515-49-1 | N.D. | N.D. | N.D. | 50 mg/kg |
| Dimethyl phthalate (DMP) CAS#:131-11-3 | N.D. | N.D. | N.D. | 30 mg/kg |
| Diethyl phthalate (DEP) CAS#:84-66-2 | N.D. | N.D. | N.D. | 30 mg/kg |
| Dipropyl phthalate (DPrP) CAS#:131-16-8 | N.D. | N.D. | N.D. | 30 mg/kg |
| Diisobutyl phthalate (DIBP) CAS#:84-69-5 | N.D. | N.D. | N.D. | 30 mg/kg |
| Dipentyl phthalate (DPP/DPENP) CAS#:131-18-0 | N.D. | N.D. | N.D. | 30 mg/kg |
| Diheptyl phthalate (DHP) CAS#:3648-21-3 | N.D. | N.D. | N.D. | 30 mg/kg |
| Dicyclohexyl phthalate (DCHP) CAS#:84-61-7 | N.D. | N.D. | N.D. | 30 mg/kg |
| Diisooctyl phthalate (DIOP) CAS#:27554-26-3 | N.D. | N.D. | N.D. | 50 mg/kg |
| Dinonyl phthalate (DNP) CAS#:84-76-4 | N.D. | N.D. | N.D. | 30 mg/kg |
| Diisononyl adipate (DINA) CAS#:33703-08-1 | N.D. | N.D. | N.D. | 50 mg/kg |

Test Report

Report No. A2220469647102

Page 12 of 32

| Tested Item(s) | Result | | | MDL |
|---|--------|------|------|----------|
| | 007 | 008 | 009 | |
| Phthalates | | | | |
| Dibutyl phthalate (DBP) CAS#:84-74-2 | N.D. | N.D. | N.D. | 30 mg/kg |
| Butyl benzyl phthalate (BBP) CAS#:85-68-7 | N.D. | N.D. | N.D. | 30 mg/kg |
| Di-(2-ethylhexyl) phthalate (DEHP) CAS#:117-81-7 | N.D. | N.D. | N.D. | 30 mg/kg |
| Di-n-octyl phthalate (DNOP) CAS#:117-84-0 | N.D. | N.D. | N.D. | 30 mg/kg |
| Di-isononyl phthalate (DINP) CAS#:28553-12-0,68515-48-0 | N.D. | N.D. | N.D. | 50 mg/kg |
| Di-iso-decyl phthalate (DIDP) CAS#:26761-40-0,68515-49-1 | N.D. | N.D. | N.D. | 50 mg/kg |
| Dimethyl phthalate (DMP) CAS#:131-11-3 | N.D. | N.D. | N.D. | 30 mg/kg |
| Diethyl phthalate (DEP) CAS#:84-66-2 | N.D. | N.D. | N.D. | 30 mg/kg |
| Dipropyl phthalate (DPrP) CAS#:131-16-8 | N.D. | N.D. | N.D. | 30 mg/kg |
| Diisobutyl phthalate (DIBP) CAS#:84-69-5 | N.D. | N.D. | N.D. | 30 mg/kg |
| Dipentyl phthalate (DPP/DPENP) CAS#:131-18-0 | N.D. | N.D. | N.D. | 30 mg/kg |
| Diheptyl phthalate (DHP) CAS#:3648-21-3 | N.D. | N.D. | N.D. | 30 mg/kg |
| Dicyclohexyl phthalate (DCHP) CAS#:84-61-7 | N.D. | N.D. | N.D. | 30 mg/kg |
| Diisooctyl phthalate (DIOP) CAS#:27554-26-3 | N.D. | N.D. | N.D. | 50 mg/kg |
| Dinonyl phthalate (DNP) CAS#:84-76-4 | N.D. | N.D. | N.D. | 30 mg/kg |
| Diisononyl adipate (DINA) CAS#:33703-08-1 | N.D. | N.D. | N.D. | 50 mg/kg |

Test Report

Report No. A2220469647102

Page 13 of 32

| Tested Item(s) | Result | | | MDL |
|---|--------|------|------|----------|
| | 010 | 011 | 013 | |
| Phthalates | | | | |
| Dibutyl phthalate (DBP) CAS#:84-74-2 | N.D. | N.D. | N.D. | 30 mg/kg |
| Butyl benzyl phthalate (BBP) CAS#:85-68-7 | N.D. | N.D. | N.D. | 30 mg/kg |
| Di-(2-ethylhexyl) phthalate (DEHP) CAS#:117-81-7 | N.D. | N.D. | N.D. | 30 mg/kg |
| Di-n-octyl phthalate (DNOP) CAS#:117-84-0 | N.D. | N.D. | N.D. | 30 mg/kg |
| Di-isononyl phthalate (DINP) CAS#:28553-12-0,68515-48-0 | N.D. | N.D. | N.D. | 50 mg/kg |
| Di-iso-decyl phthalate (DIDP) CAS#:26761-40-0,68515-49-1 | N.D. | N.D. | N.D. | 50 mg/kg |
| Dimethyl phthalate (DMP) CAS#:131-11-3 | N.D. | N.D. | N.D. | 30 mg/kg |
| Diethyl phthalate (DEP) CAS#:84-66-2 | N.D. | N.D. | N.D. | 30 mg/kg |
| Dipropyl phthalate (DPrP) CAS#:131-16-8 | N.D. | N.D. | N.D. | 30 mg/kg |
| Diisobutyl phthalate (DIBP) CAS#:84-69-5 | N.D. | N.D. | N.D. | 30 mg/kg |
| Dipentyl phthalate (DPP/DPENP) CAS#:131-18-0 | N.D. | N.D. | N.D. | 30 mg/kg |
| Diheptyl phthalate (DHP) CAS#:3648-21-3 | N.D. | N.D. | N.D. | 30 mg/kg |
| Dicyclohexyl phthalate (DCHP) CAS#:84-61-7 | N.D. | N.D. | N.D. | 30 mg/kg |
| Diisooctyl phthalate (DIOP) CAS#:27554-26-3 | N.D. | N.D. | N.D. | 50 mg/kg |
| Dinonyl phthalate (DNP) CAS#:84-76-4 | N.D. | N.D. | N.D. | 30 mg/kg |
| Diisononyl adipate (DINA) CAS#:33703-08-1 | N.D. | N.D. | N.D. | 50 mg/kg |

Test Report

Report No. A2220469647102

Page 14 of 32

| Tested Item(s) | Result | | | MDL |
|--------------------------------|--------|------|------|---------|
| | 001 | 002 | 003 | |
| Tetrabromobisphenol A (TBBP-A) | N.D. | N.D. | N.D. | 5 mg/kg |

| Tested Item(s) | Result | | | MDL |
|--------------------------------|--------|------|------|---------|
| | 004 | 005 | 006 | |
| Tetrabromobisphenol A (TBBP-A) | N.D. | N.D. | N.D. | 5 mg/kg |

| Tested Item(s) | Result | | | MDL |
|--------------------------------|--------|------|------|---------|
| | 007 | 008 | 009 | |
| Tetrabromobisphenol A (TBBP-A) | N.D. | N.D. | N.D. | 5 mg/kg |

| Tested Item(s) | Result | | | MDL |
|--------------------------------|--------|------|------|---------|
| | 010 | 011 | 013 | |
| Tetrabromobisphenol A (TBBP-A) | N.D. | N.D. | N.D. | 5 mg/kg |

Test Report

Report No. A2220469647102

Page 15 of 32

| Tested Item(s) | Result | | | | MDL |
|--|-----------|-----------|-----------|-----------|-----------|
| | 001 | 002 | 003 | 004 | |
| Polycyclic Aromatic Hydrocarbons (PAHs) | | | | | |
| Naphthalene | 3.0 mg/kg | 2.3 mg/kg | 2.3 mg/kg | 1.6 mg/kg | 0.2 mg/kg |
| Phenanthrene | N.D. | N.D. | N.D. | N.D. | 0.2 mg/kg |
| Anthracene | N.D. | N.D. | N.D. | N.D. | 0.2 mg/kg |
| Fluoranthene | N.D. | N.D. | N.D. | N.D. | 0.2 mg/kg |
| Pyrene | N.D. | N.D. | N.D. | N.D. | 0.2 mg/kg |
| Chrysene | N.D. | N.D. | N.D. | N.D. | 0.2 mg/kg |
| Benzo(a)anthracene | N.D. | N.D. | N.D. | N.D. | 0.2 mg/kg |
| Benzo(b)fluoranthene | N.D. | N.D. | N.D. | N.D. | 0.2 mg/kg |
| Benzo(k)fluoranthene | N.D. | N.D. | N.D. | N.D. | 0.2 mg/kg |
| Benzo(j)fluoranthene | N.D. | N.D. | N.D. | N.D. | 0.2 mg/kg |
| Benzo(a)pyrene | N.D. | N.D. | N.D. | N.D. | 0.2 mg/kg |
| Benzo(e)pyrene | N.D. | N.D. | N.D. | N.D. | 0.2 mg/kg |
| Dibenzo(a,h)anthracene | N.D. | N.D. | N.D. | N.D. | 0.2 mg/kg |
| Benzo(g,h,i)perylene | N.D. | N.D. | N.D. | N.D. | 0.2 mg/kg |
| Indenol(1,2,3-cd)pyrene | N.D. | N.D. | N.D. | N.D. | 0.2 mg/kg |
| Acenaphthene | N.D. | N.D. | N.D. | N.D. | 0.2 mg/kg |
| Fluorene | N.D. | N.D. | N.D. | N.D. | 0.2 mg/kg |
| Acenaphthylene | N.D. | N.D. | N.D. | N.D. | 0.2 mg/kg |

Test Report

Report No. A2220469647102

Page 16 of 32

| Tested Item(s) | Result | | | | MDL |
|--|-----------|-----------|-----------|-----------|-----------|
| | 005 | 006 | 007 | 008 | |
| Polycyclic Aromatic Hydrocarbons (PAHs) | | | | | |
| Naphthalene | 1.6 mg/kg | 2.3 mg/kg | 1.6 mg/kg | 1.6 mg/kg | 0.2 mg/kg |
| Phenanthrene | N.D. | N.D. | N.D. | N.D. | 0.2 mg/kg |
| Anthracene | N.D. | N.D. | N.D. | N.D. | 0.2 mg/kg |
| Fluoranthene | N.D. | N.D. | N.D. | N.D. | 0.2 mg/kg |
| Pyrene | N.D. | N.D. | N.D. | N.D. | 0.2 mg/kg |
| Chrysene | N.D. | N.D. | N.D. | N.D. | 0.2 mg/kg |
| Benzo(a)anthracene | N.D. | N.D. | N.D. | N.D. | 0.2 mg/kg |
| Benzo(b)fluoranthene | N.D. | N.D. | N.D. | N.D. | 0.2 mg/kg |
| Benzo(k)fluoranthene | N.D. | N.D. | N.D. | N.D. | 0.2 mg/kg |
| Benzo(j)fluoranthene | N.D. | N.D. | N.D. | N.D. | 0.2 mg/kg |
| Benzo(a)pyrene | N.D. | N.D. | N.D. | N.D. | 0.2 mg/kg |
| Benzo(e)pyrene | N.D. | N.D. | N.D. | N.D. | 0.2 mg/kg |
| Dibenzo(a,h)anthracene | N.D. | N.D. | N.D. | N.D. | 0.2 mg/kg |
| Benzo(g,h,i)perylene | N.D. | N.D. | N.D. | N.D. | 0.2 mg/kg |
| Indenol(1,2,3-cd)pyrene | N.D. | N.D. | N.D. | N.D. | 0.2 mg/kg |
| Acenaphthene | N.D. | N.D. | N.D. | N.D. | 0.2 mg/kg |
| Fluorene | N.D. | N.D. | N.D. | N.D. | 0.2 mg/kg |
| Acenaphthylene | N.D. | N.D. | N.D. | N.D. | 0.2 mg/kg |

Test Report

Report No. A2220469647102

Page 17 of 32

| Tested Item(s) | Result | | | | MDL |
|--|-----------|-----------|------|------|-----------|
| | 009 | 010 | 011 | 013 | |
| Polycyclic Aromatic Hydrocarbons (PAHs) | | | | | |
| Naphthalene | 1.4 mg/kg | 0.8 mg/kg | N.D. | N.D. | 0.2 mg/kg |
| Phenanthrene | N.D. | N.D. | N.D. | N.D. | 0.2 mg/kg |
| Anthracene | N.D. | N.D. | N.D. | N.D. | 0.2 mg/kg |
| Fluoranthene | N.D. | N.D. | N.D. | N.D. | 0.2 mg/kg |
| Pyrene | N.D. | N.D. | N.D. | N.D. | 0.2 mg/kg |
| Chrysene | N.D. | N.D. | N.D. | N.D. | 0.2 mg/kg |
| Benzo(a)anthracene | N.D. | N.D. | N.D. | N.D. | 0.2 mg/kg |
| Benzo(b)fluoranthene | N.D. | N.D. | N.D. | N.D. | 0.2 mg/kg |
| Benzo(k)fluoranthene | N.D. | N.D. | N.D. | N.D. | 0.2 mg/kg |
| Benzo(j)fluoranthene | N.D. | N.D. | N.D. | N.D. | 0.2 mg/kg |
| Benzo(a)pyrene | N.D. | N.D. | N.D. | N.D. | 0.2 mg/kg |
| Benzo(e)pyrene | N.D. | N.D. | N.D. | N.D. | 0.2 mg/kg |
| Dibenzo(a,h)anthracene | N.D. | N.D. | N.D. | N.D. | 0.2 mg/kg |
| Benzo(g,h,i)perylene | N.D. | N.D. | N.D. | N.D. | 0.2 mg/kg |
| Indenol(1,2,3-cd)pyrene | N.D. | N.D. | N.D. | N.D. | 0.2 mg/kg |
| Acenaphthene | N.D. | N.D. | N.D. | N.D. | 0.2 mg/kg |
| Fluorene | N.D. | N.D. | N.D. | N.D. | 0.2 mg/kg |
| Acenaphthylene | N.D. | N.D. | N.D. | N.D. | 0.2 mg/kg |

Test Report

Report No. A2220469647102

Page 18 of 32

| Tested Item(s) | Result | | | MDL |
|----------------|-----------|-----------|-----------|-----------|
| | 001 | 002 | 003 | |
| Red phosphorus | Negative* | Negative* | Negative* | 500 mg/kg |

| Tested Item(s) | Result | | | MDL |
|----------------|-----------|-----------|-----------|-----------|
| | 004 | 005 | 006 | |
| Red phosphorus | Negative* | Negative* | Negative* | 500 mg/kg |

| Tested Item(s) | Result | | | MDL |
|----------------|-----------|-----------|-----------|-----------|
| | 007 | 008 | 009 | |
| Red phosphorus | Negative* | Negative* | Negative* | 500 mg/kg |

| Tested Item(s) | Result | | | MDL |
|----------------|-----------|-----------|-----------|-----------|
| | 010 | 011 | 013 | |
| Red phosphorus | Negative* | Negative* | Negative* | 500 mg/kg |

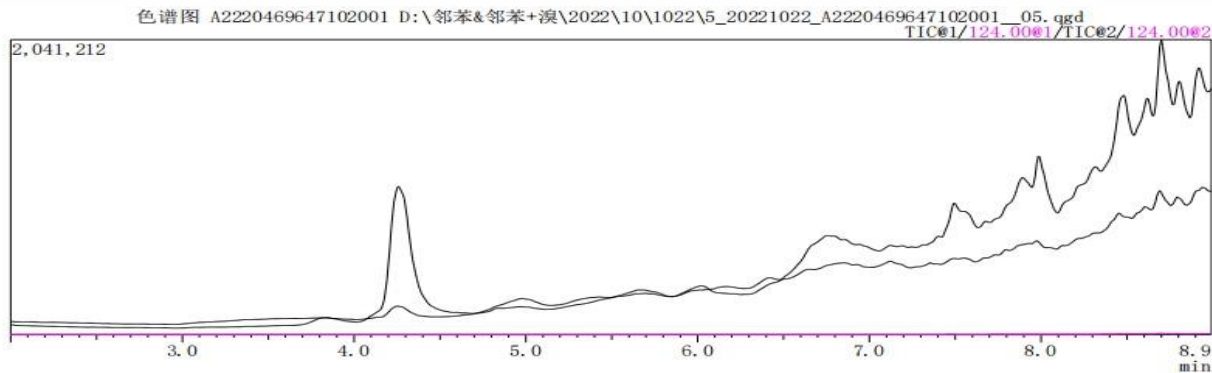
Test Report

Report No. A2220469647102

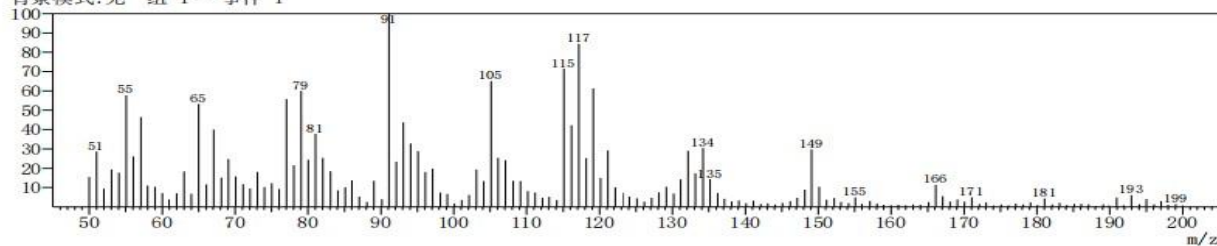
Page 19 of 32

Red phosphorus test spectra

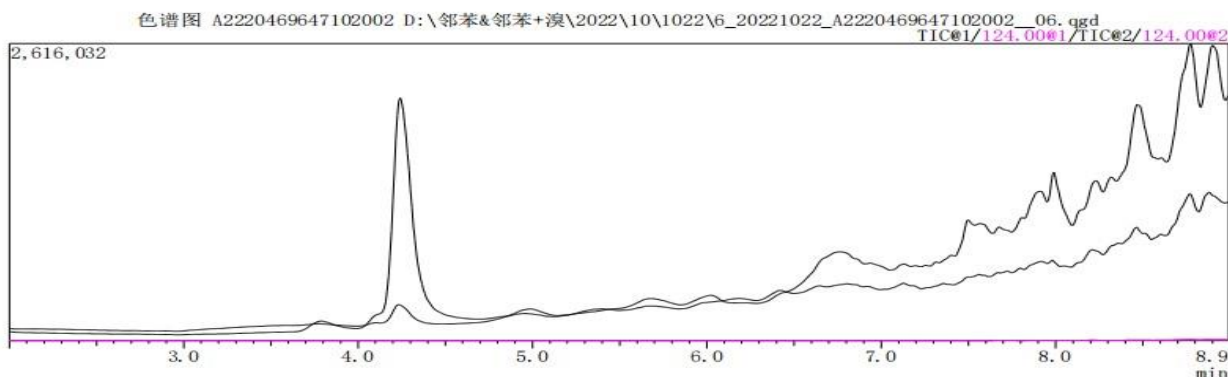
Sample 001 Test Spectra



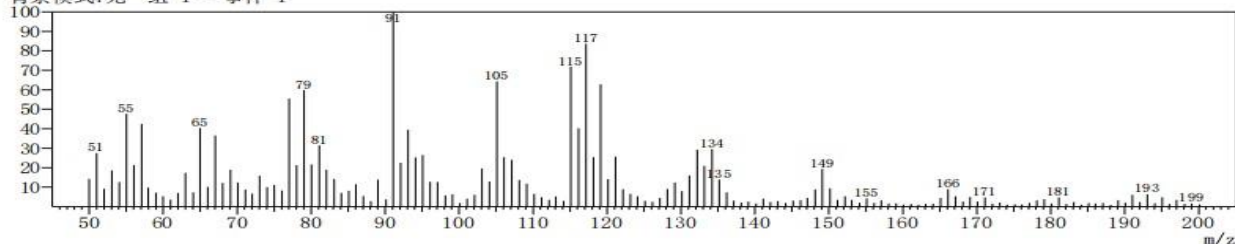
ID#:1 保留时间: N. D. (W/B) (扫描数:1015)
质量峰:151
原始模式:单个 6.225 (1015)
背景模式:无 组 1 - 事件 1



Sample 002 Test Spectra



ID#:1 保留时间: N. D. (W/B) (扫描数:1015)
质量峰:151
原始模式:单个 6.225 (1015)
背景模式:无 组 1 - 事件 1

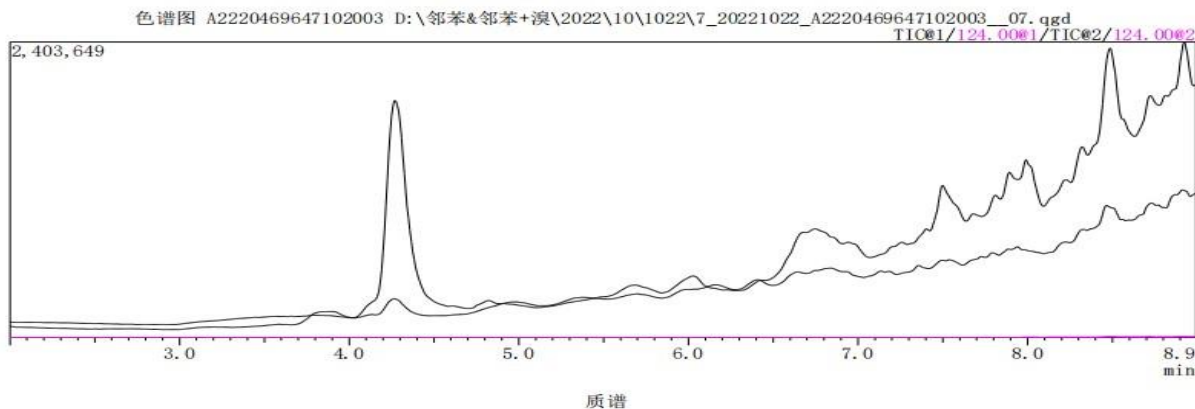


Test Report

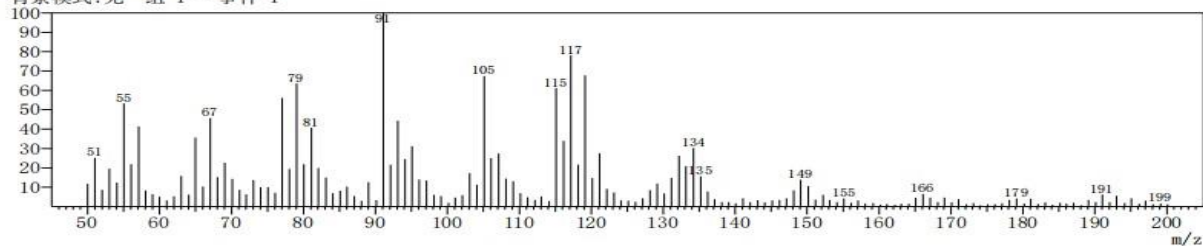
Report No. A2220469647102

Page 20 of 32

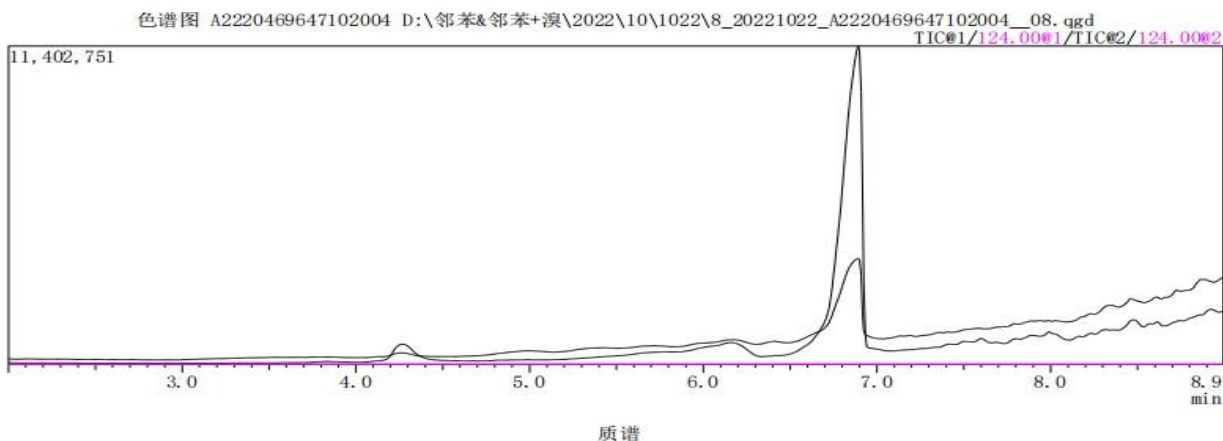
Sample 003 Test Spectra



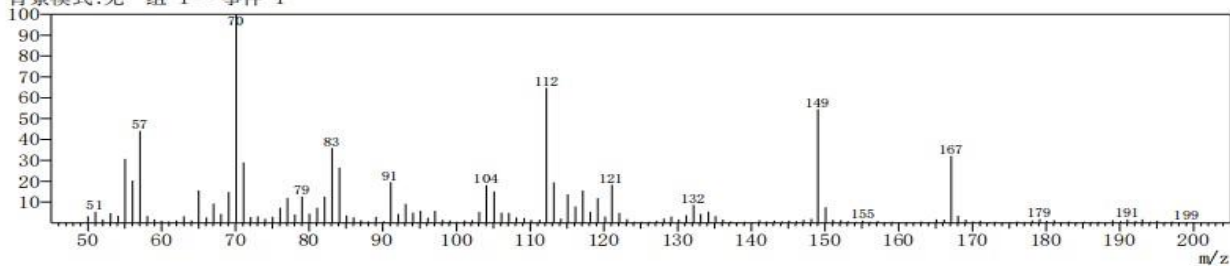
ID#:1 保留时间: N. D. (W/B) (扫描数:1015)
质量峰:151
原始模式:单个 6.225(1015)
背景模式:无 组 1 - 事件 1



Sample 004 Test Spectra



ID#:1 保留时间: N. D. (W/B) (扫描数:1015)
质量峰:151
原始模式:单个 6.225(1015)
背景模式:无 组 1 - 事件 1

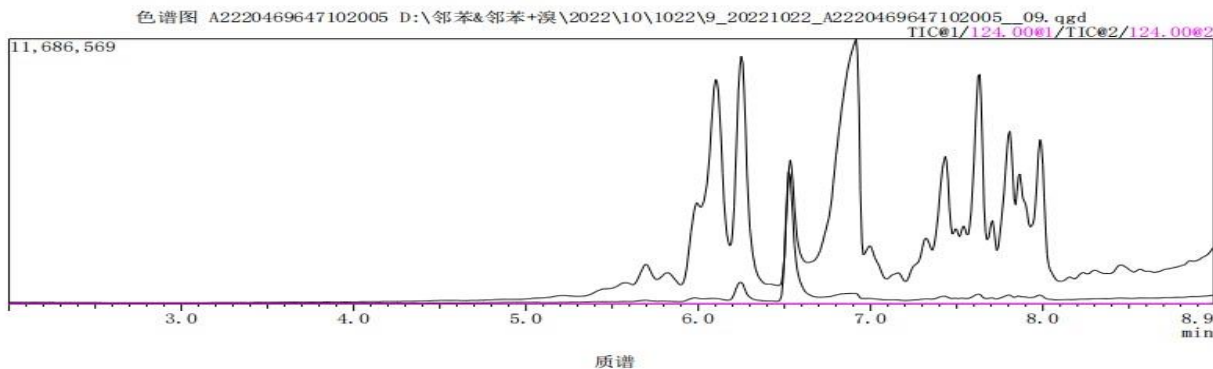


Test Report

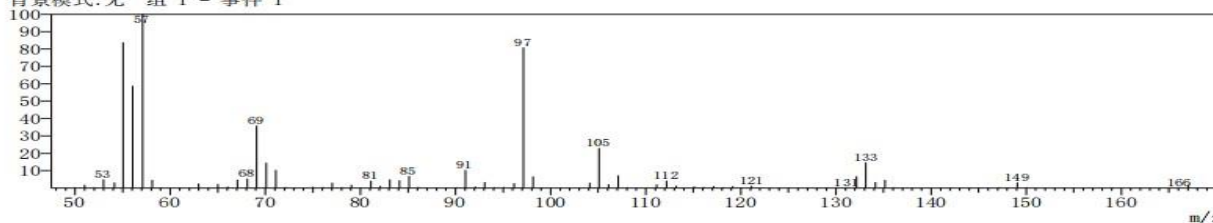
Report No. A2220469647102

Page 21 of 32

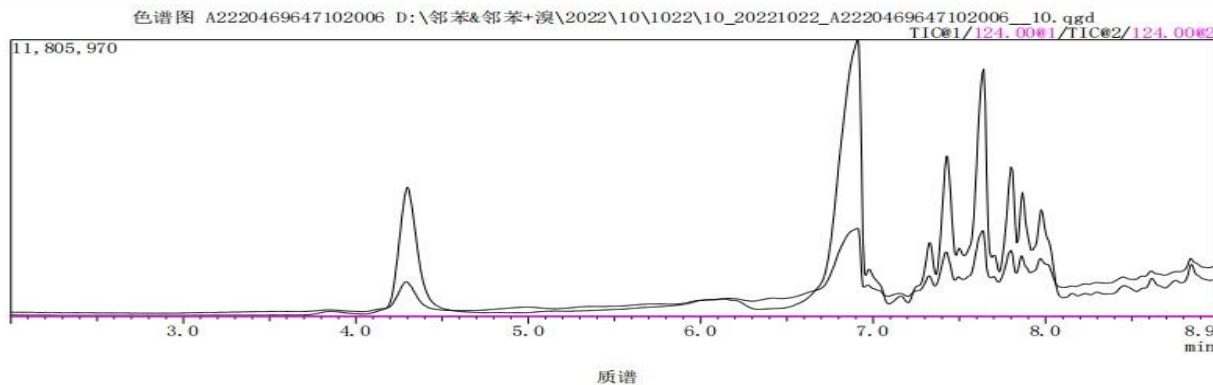
Sample 005 Test Spectra



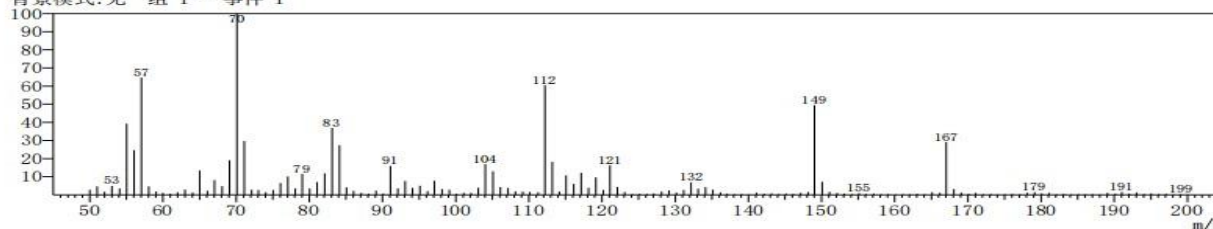
ID#:1 保留时间: N.D. (W/B) (扫描数:1015)
质量峰:86
原始模式:单个 6.225(1015)
背景模式:无 组 1 - 事件 1



Sample 006 Test Spectra



ID#:1 保留时间: N.D. (W/B) (扫描数:1015)
质量峰:151
原始模式:单个 6.225(1015)
背景模式:无 组 1 - 事件 1

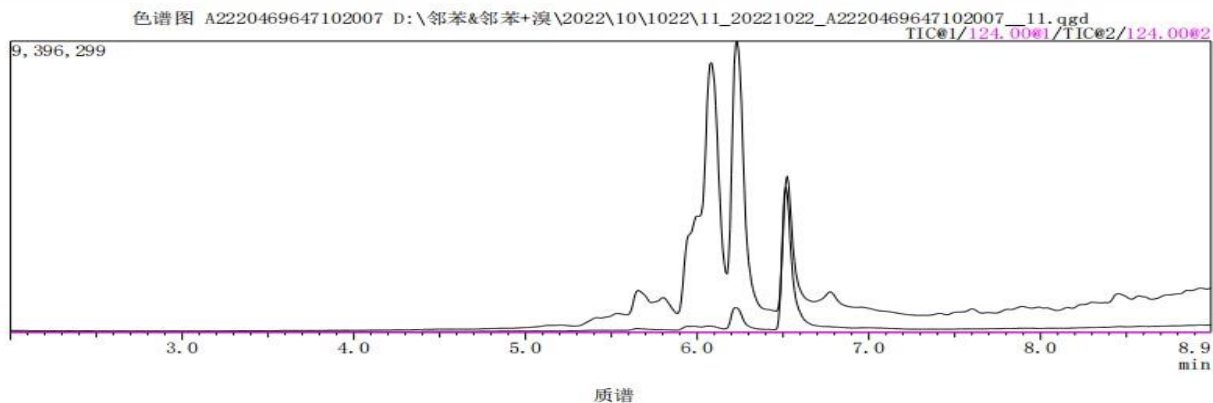


Test Report

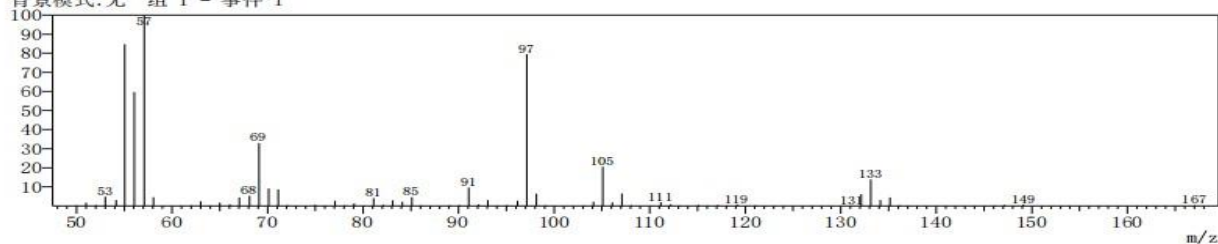
Report No. A2220469647102

Page 22 of 32

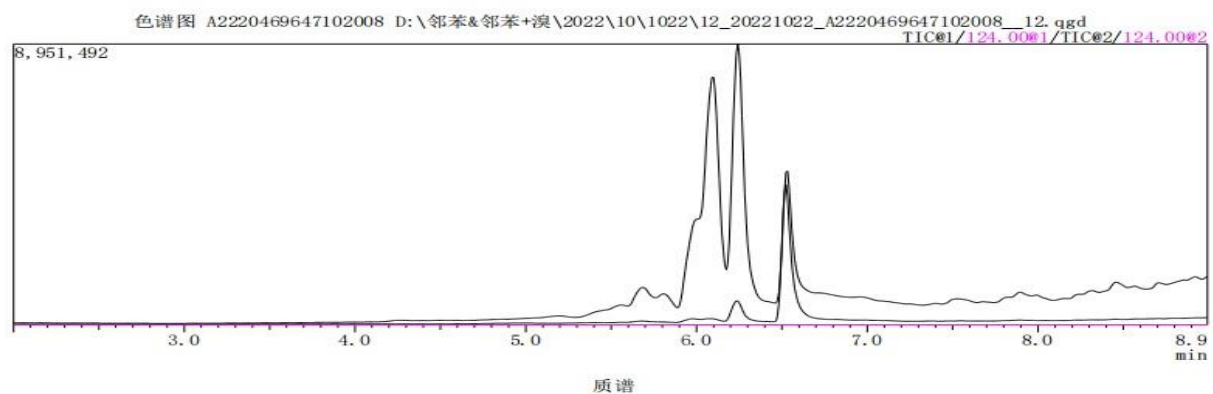
Sample 007 Test Spectra



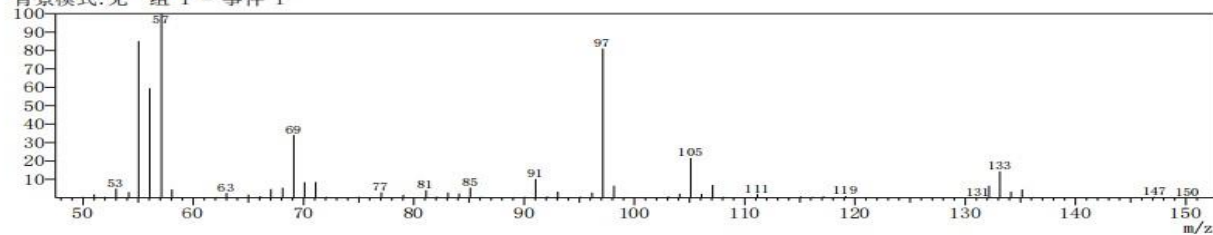
ID#:1 保留时间: N. D. (W/B) (扫描数:1015)
质量峰:77
原始模式:单个 6.225(1015)
背景模式:无 组 1 - 事件 1



Sample 008 Test Spectra



ID#:1 保留时间: N. D. (W/B) (扫描数:1015)
质量峰:77
原始模式:单个 6.225(1015)
背景模式:无 组 1 - 事件 1

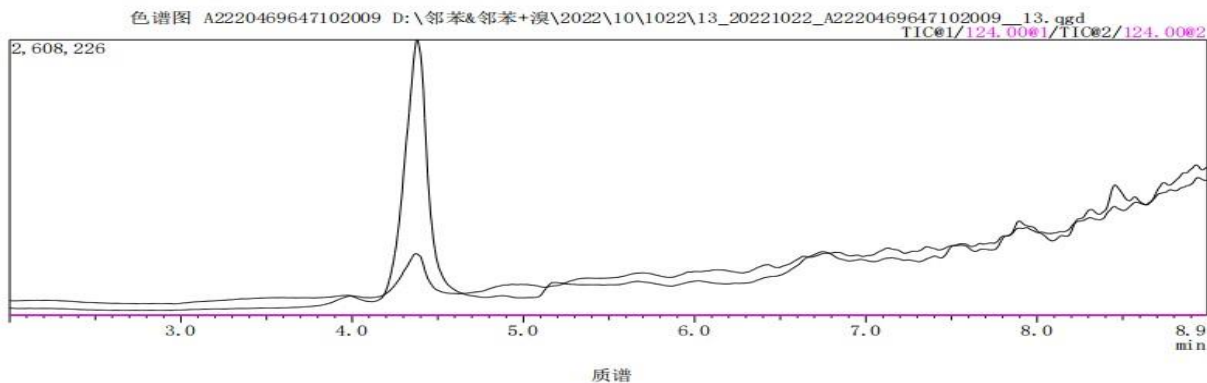


Test Report

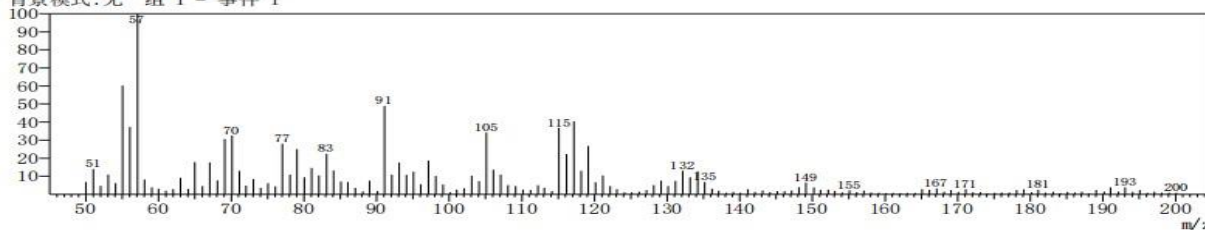
Report No. A2220469647102

Page 23 of 32

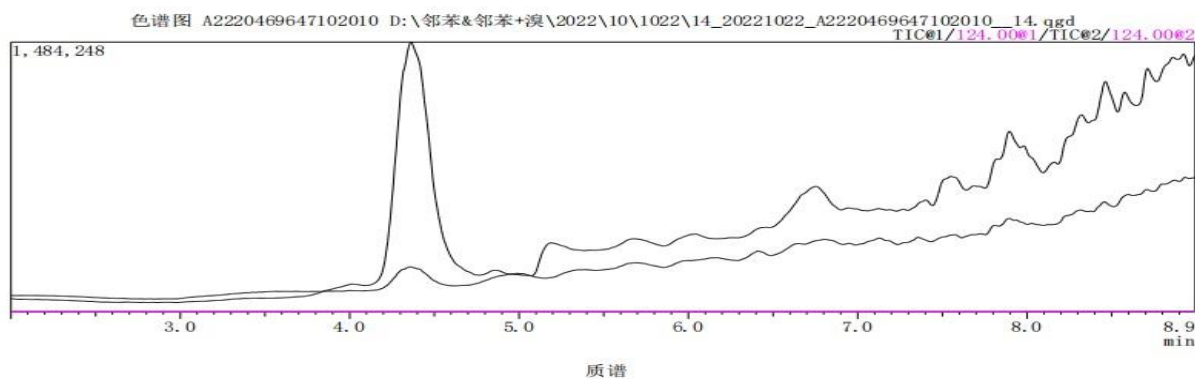
Sample 009 Test Spectra



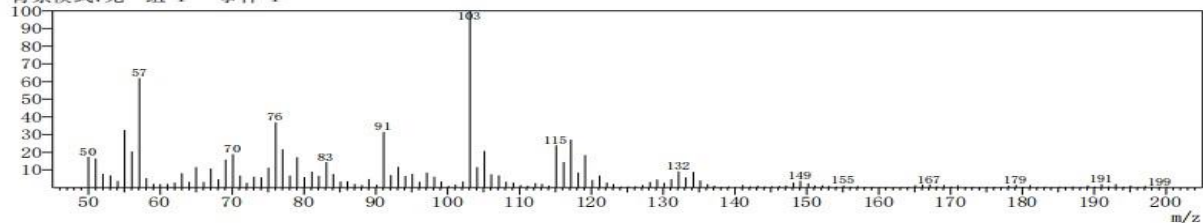
ID#: 1 保留时间: N.D. (W/B) (扫描数: 1015)
质量峰: 151
原始模式: 单个 6.225 (1015)
背景模式: 无 组 1 - 事件 1



Sample 010 Test Spectra



ID#: 1 保留时间: N.D. (W/B) (扫描数: 1015)
质量峰: 151
原始模式: 单个 6.225 (1015)
背景模式: 无 组 1 - 事件 1

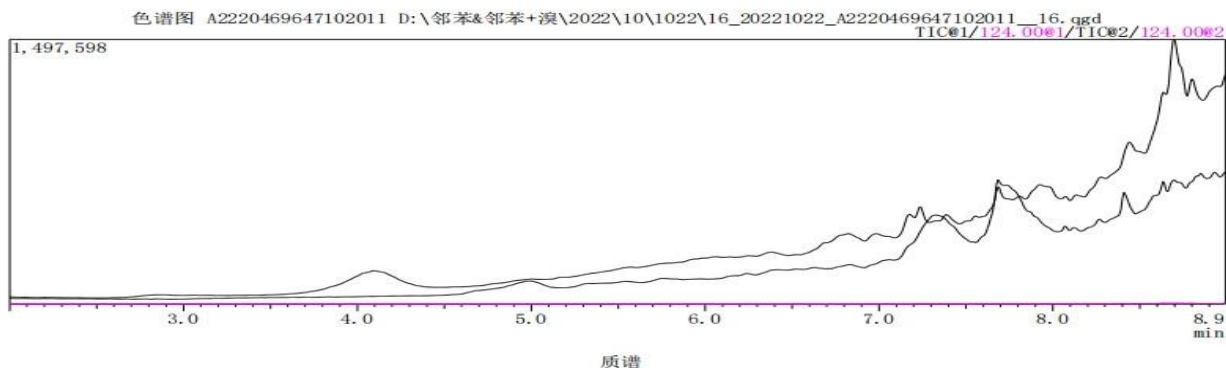


Test Report

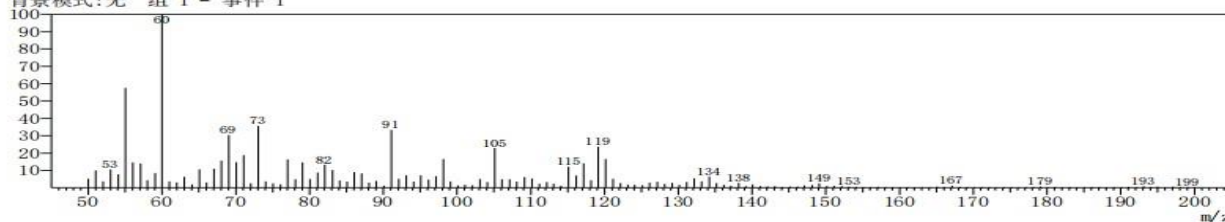
Report No. A2220469647102

Page 24 of 32

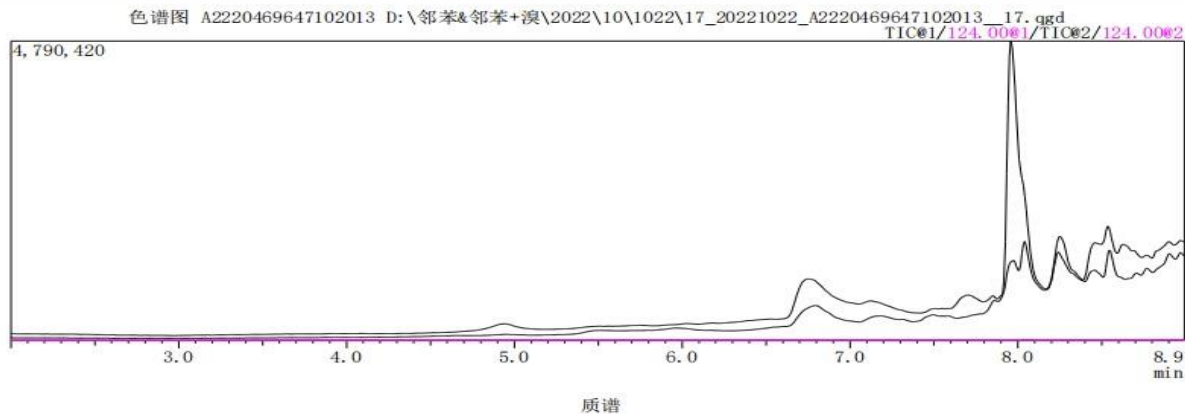
Sample 011 Test Spectra



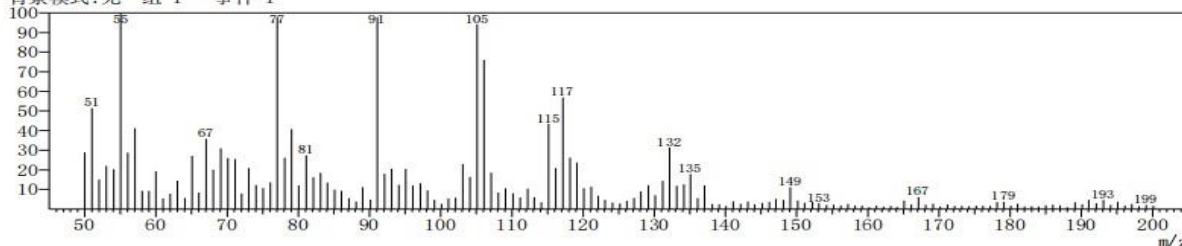
ID#:1 保留时间: N.D. (W/B) (扫描数:1015)
质量峰:151
原始模式:单个 6.225 (1015)
背景模式:无 组 1 - 事件 1



Sample 013 Test Spectra



ID#:1 保留时间: N.D. (W/B) (扫描数:1015)
质量峰:151
原始模式:单个 6.225 (1015)
背景模式:无 组 1 - 事件 1

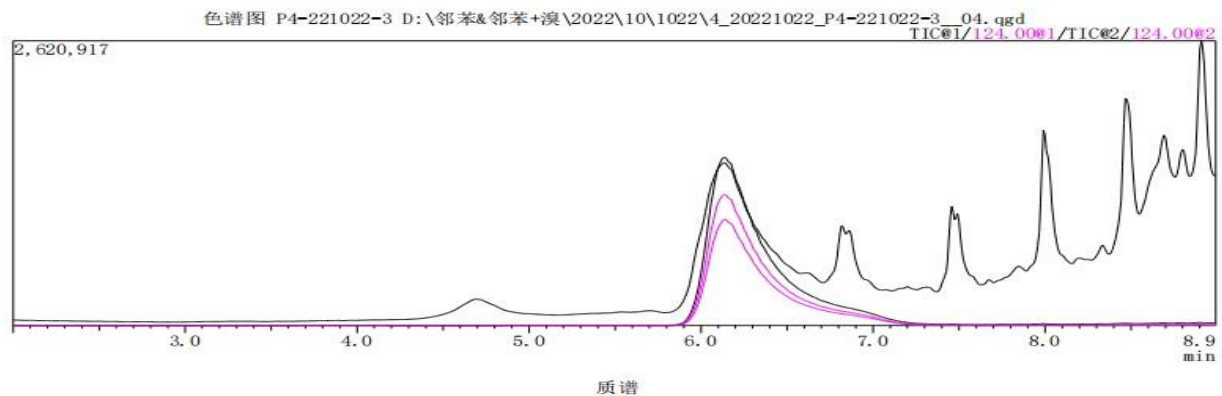


Test Report

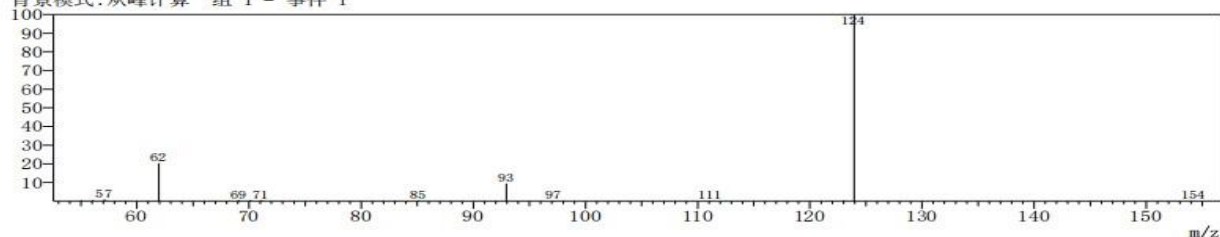
Report No. A2220469647102

Page 25 of 32

Standard Material Test Spectra



ID#: 1 保留时间: 6.142 (扫描数: 995)
质量峰: 18
原始模式: 平均 6.133-6.150 (993-997)
背景模式: 从峰计算 组 1 - 事件 1



Sample/Part Description

- 001 Black plastic grains
- 002 White plastic grains
- 003 Dark brown plastic grains
- 004 Blue plastic grains
- 005 Yellow plastic grains
- 006 Green plastic grains
- 007 Red plastic grains
- 008 Orange plastic grains
- 009 Purple plastic grains
- 010 Pink plastic grains
- 011 White ink
- 012 Cupreous metal
- 013 White plastic
- 014 Metal with silvery plating
- 015 Golden metal

Test Report

Report No. A2220469647102

Page 26 of 32

Remark: The sample(s) had been dissolved totally tested for Lead, Cadmium, Mercury.

-MDL = Method Detection Limit

-N.D. = Not Detected (<MDL or LOQ)

-mg/kg = ppm = parts per million

-LOQ = Limit of Quantification, The LOQ of Hexavalent chromium is 0.10 $\mu\text{g}/\text{cm}^2$

-▼The sample is negative for Cr(VI) – The Cr(VI) concentration is below 0.10 $\mu\text{g}/\text{cm}^2$. The coating is considered a non-Cr(VI) based coating.

-Positive = Contained

-The red phosphorus is qualified by PY-GC-MS method which detect pyrolysis products P₄ of red phosphorus. But there is a false positive risk by performing this method, since P₄ could also generate while the phosphate and organic phosphate coexist with some strong oxidizing or reductant agent in pyrolysis process.

-*Result for reference only.

Note: The testing data and result(s) in this report is(are) just for scientific research, education, internal quality control and product development etc.

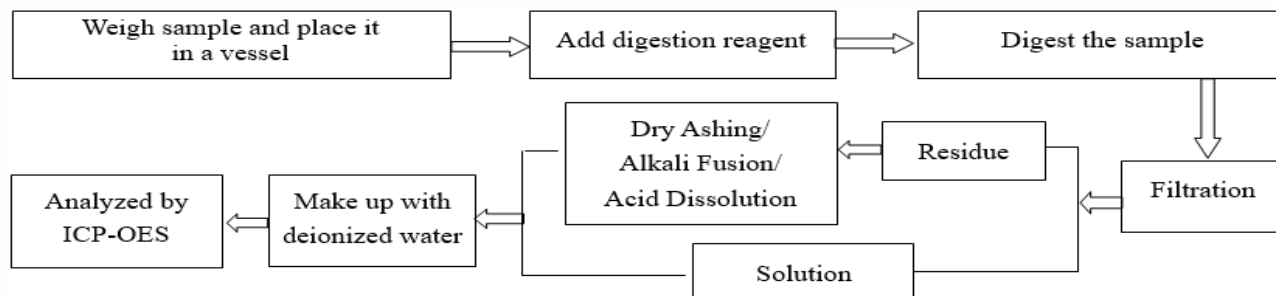
Test Report

Report No. A2220469647102

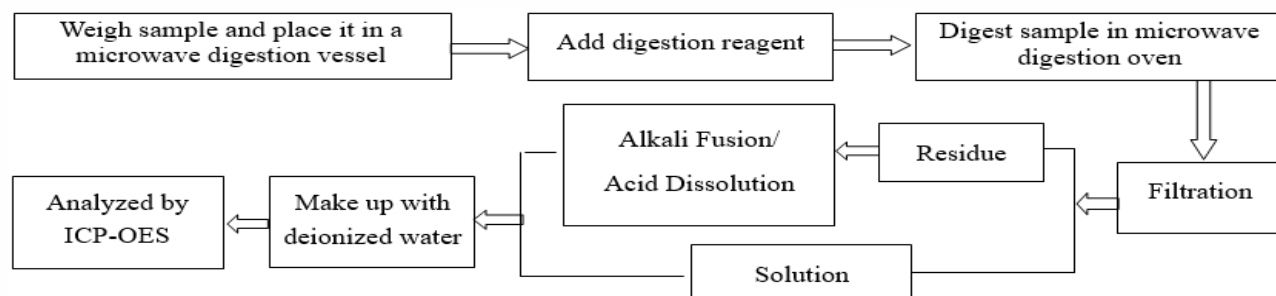
Page 27 of 32

Test Process

1. Lead (Pb), Cadmium (Cd), Chromium(Cr)

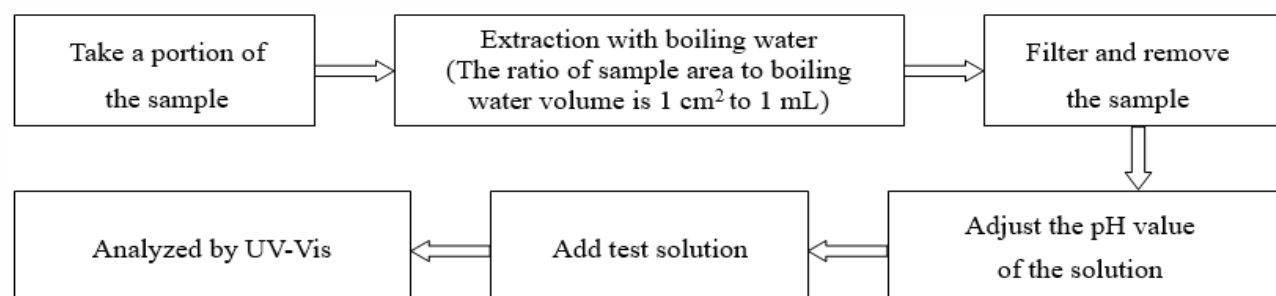


2. Mercury (Hg)

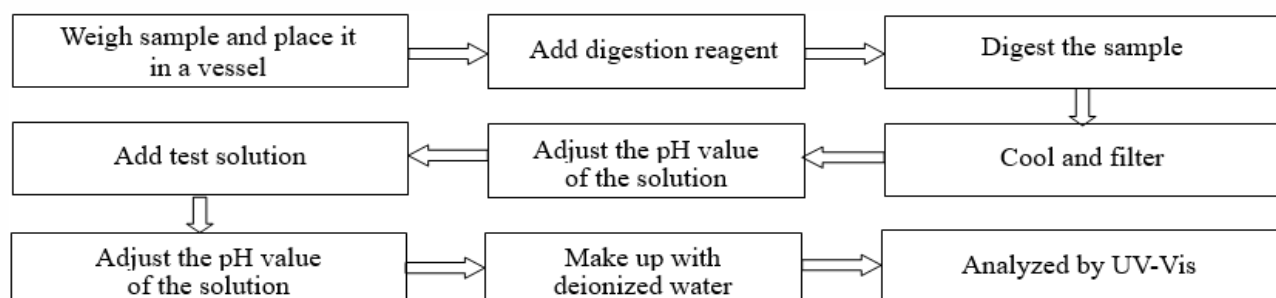


3. Hexavalent Chromium (Cr(VI))

(1) IEC 62321-7-1:2015



(2) IEC 62321-7-2:2017

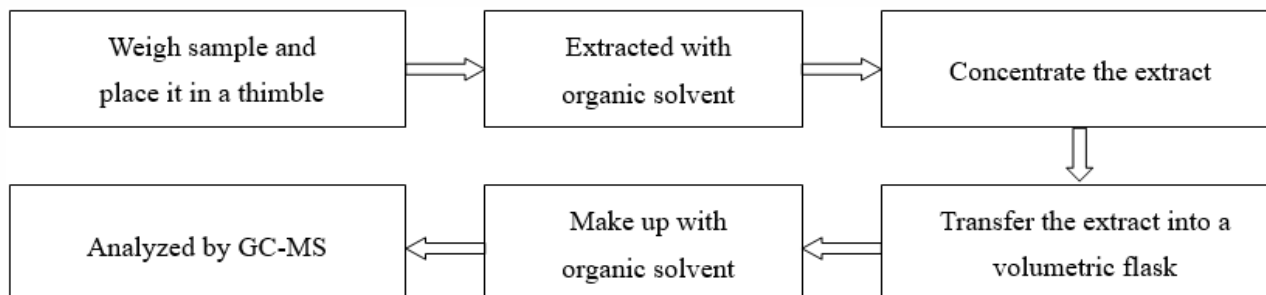


Test Report

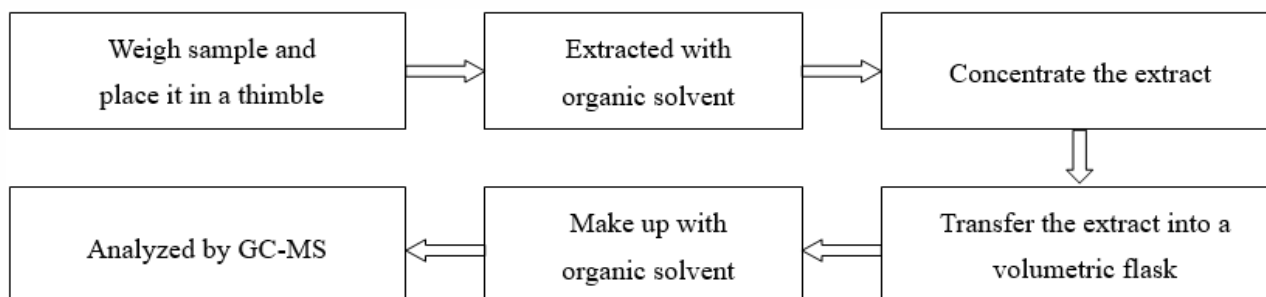
Report No. A2220469647102

Page 28 of 32

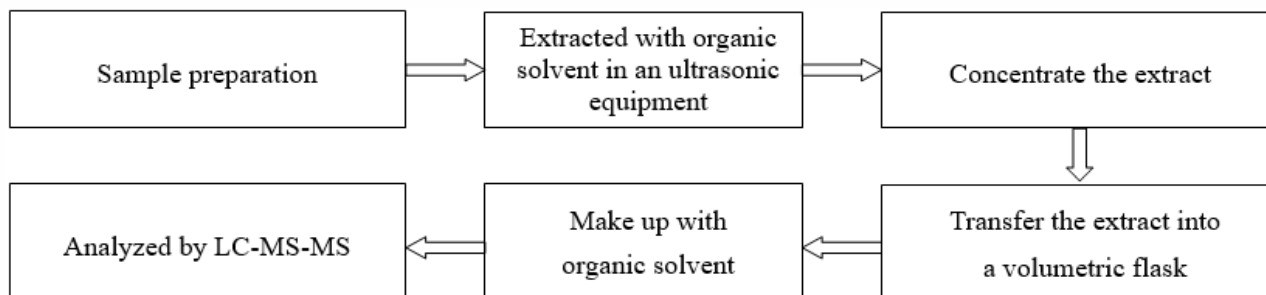
4. Polybrominated Biphenyls (PBBs), Polybrominated Diphenyl Ethers (PBDEs)



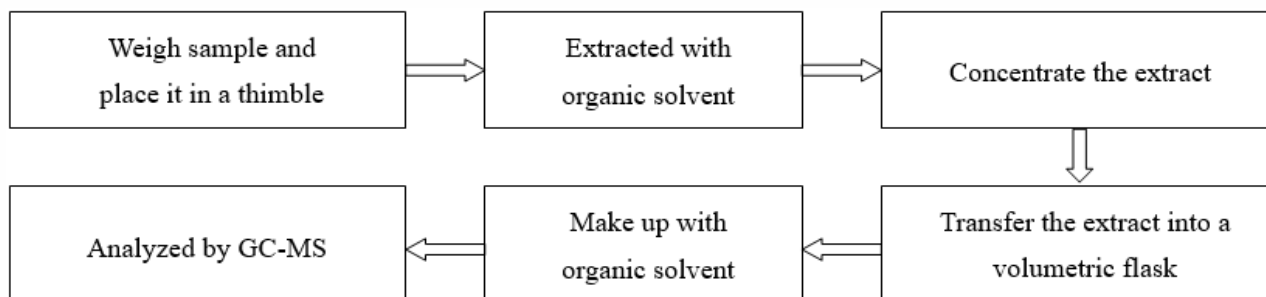
5. Phthalates (DBP, BBP, DEHP, DIBP)



6. Perfluorooctane Sulfonates(PFOS)



7. Phthalates

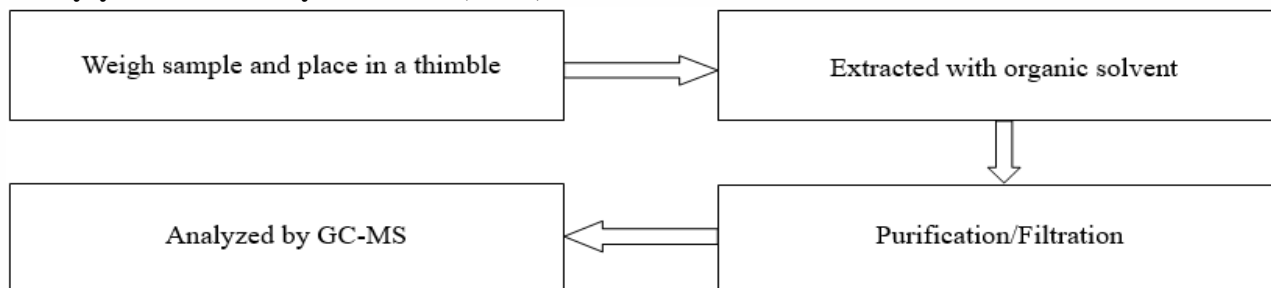


Test Report

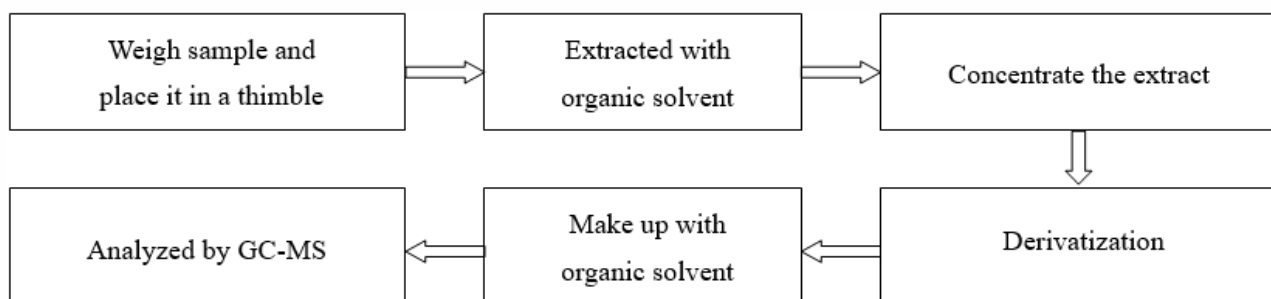
Report No. A2220469647102

Page 29 of 32

8. Polycyclic Aromatic Hydrocarbons (PAHs)



9. Tetrabromobisphenol A (TBBP-A)



Test Report

Report No. A2220469647102

Page 30 of 32

Photo(s) of the sample(s)

001



002



003



004



005



006



Test Report

Report No. A2220469647102

Page 31 of 32

007



008



009



010



011



012



Test Report

Report No. A2220469647102

Page 32 of 32

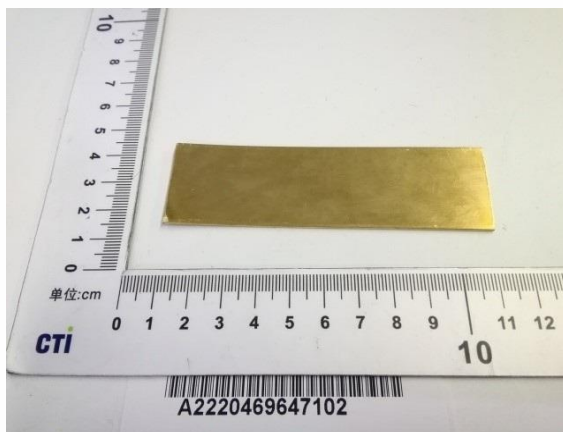
013



014



015



Statement:

1. This report is considered invalid without approved signature, special seal and the seal on the perforation;
2. The Company Name shown on Report and Address, the sample(s) and sample information was/were provided by the applicant who should be responsible for the authenticity which CTI hasn't verified;
3. The result(s) shown in this report refer(s) only to the sample(s) tested;
4. Without written approval of CTI, this report can't be reproduced except in full;
5. In case of any discrepancy between the English version and Chinese version of the testing reports (if generated), the Chinese version shall prevail.

*** End of Report ***

Appendix

Client Reference Information

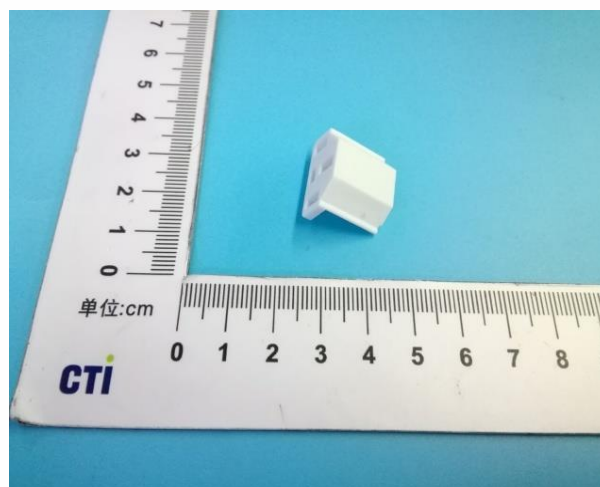
| 產品型號(插頭 附件 1) | | | | | | | | |
|----------------------------------|-----------|---------|-----------|--------|----------|----------|------------|---------|
| AC/DC POWER CORD & PLUG ADAPTERS | | | | | | | | |
| YP-01 | YP-12L-15 | YP-17 | YP-28 | YP-34 | YP-66 | YP-316 | YC-01 | YC-13A |
| YP-02 | YP-12L-16 | YP-17L | YP-29 | YP-34D | YP-67 | YP-332 | YC-03 | YC-13B |
| YP-02L | YP-12L-17 | YP-17H | YP-30 | YP-35 | YP-68L | YP-516 | YC-04 | YC-13BL |
| YP-03 | YP-12L-18 | YP-17HL | YP-31 | YP-35L | YP-69L | YP-532 | YC-05 | YC-13C |
| YP-03A | YP-12N | YP-17C | YP-31A | YP-36 | YP-71 | YP-416 | YC-05-1 | YC-13D |
| YP-03B | YP-12P | YP-18 | YP-31L | YP-37 | YP-73L | YP-432 | YC-05A | YC-13E |
| YP-03L | YP-12D | YP-18A | YP-31W | YP-37A | YP-75L | YS-32Q | YC-05B | YC-13G |
| YP-03H | YP-13 | YP-18B | YP-32 | YP-38 | YP-76 | YS-32W | YC-05C | YC-13H |
| YP-04 | YP-13B | YP-18L | YP-32L | YP-39 | YP-77 | YS-33Q | YC-05E | YC-13K |
| YP-05 | YP-13BL | YP-18N | YP-32A | YP-39A | YP-78 | YS-33W | YC-05F | YC-13L |
| YP-06 | YP-13C | YP-18T | YP-32B | YP-40 | YP-79 | YS-12W | YC-05L | YC-13LG |
| YP-07 | YP-13D | YP-18G | YP-32BL | YP-41 | YP-80 | YS-12Q | YC-05U | YC-13S |
| YP-08 | YP-13H | YP-19 | YP-32BL-1 | YP-41A | YP-81 | YS-18W | YC-06 | YC-13W |
| YP-09 | YP-13HB | YP-19L | YP-32BL-2 | YP-42 | YP-82 | YS-18Q | YC-06R | YC-13F |
| YP-10 | YP-13HP | YP-19H | YP-32BL-3 | YP-43 | YP-83 | YS-12W-1 | YC-07 | YC-13P |
| YP-11 | YP-13L | YP-19HL | YP-32BL-4 | YP-45 | YP-84 | YS-32W-1 | YC-07A | YC-13PL |
| YP-11A | YP-13M | YP-19C | YP-32D | YP-45A | YP-88L | YS-33W-1 | YC-07W | YC-14 |
| YP-11B | YP-13N | YP-20 | YP-32F | YP-46 | YP-90L | YP-32L-1 | YC-08 | YC-14G |
| YP-11C | YP-13O | YP-21A | YP-32H | YP-46A | YP-91L | YP-32L-2 | YC-09 | YC-14L |
| YP-11K | YP-13P | YP-21C | YP-32G | YP-47 | YP-92L | YP-32L-3 | YC-10 | YC-14GL |
| YP-11L | YP-13Q | YP-21K | YP-32Y | YP-47A | YP-93L | YP-33L-1 | YC-11 | YC-14LA |
| YP-11L-9 | YP-13S | YP-21S | YP-32C | YP-48 | YP-93L-1 | / | YC-11GL | YC-14S |
| YP-11W | YP-13G | YP-21T | YP-32E | YP-49 | YP-93L-2 | / | YC-11GL+E | YC-15 |
| YP-11P | YP-13E | YP-21H | YP-32P | YP-50 | YP-93L-3 | / | YC-11GLR | YC-15A |
| YP-11T | YP-13T | YP-22 | YP-32P-1 | YP-51 | YP-94L | / | YC-11GLR+E | YC-15E |
| YP-11R | YP-13K | YP-22K | YP-32P-2 | YP-52 | YP-95L | / | YC-12 | YC-16 |
| YP-11G | YP-13Y | YP-23 | YP-33 | YP-53 | YP-96L | / | YC-12A | YC-17 |
| YP-11F | YP-13F | YP-23K | YP-33A | YP-54 | YP-97L | / | YC-12C | YC-17A |
| YP-12 | YP-13R | YP-24 | YP-33AL | YP-55 | YP-98L | / | YC-12D | YC-18 |
| YP-12A | YP-13W | YP-24K | YP-33AL-1 | YP-56 | YP-99L | / | YC-12G | YC-18L |

| | | | | | | | | |
|-----------|----------|------------|-----------|------------|----------|----------|------------|----------------|
| YP-12C | YP-14 | YP-24L | YP-33AL-2 | YP-57 | YP-103L | / | YC-12K | YC-18A |
| YP-12E | YP-15 | YP-24L-1 | YP-33AL-3 | YP-58 | YP-107 | / | YC-12P | YC-18K |
| YP-12G | YP-15G | YP-24F | YP-33AL-4 | YP-58N | YP-108 | / | YC-12PL | YC-18E |
| YP-12L | YP-15F | YP-25 | YP-33B | YP-59 | YP-109 | / | YC-12-01 | YC-18P |
| YP-12L-9 | YP-15T | YP-26 | YP-33C | YP-60L | YP-110 | / | YC-12GL | YC-18PL |
| YP-12L-10 | YP-16 | YP-26A | YP-33E | YP-61 | YP-111 | / | YC-12GL+E | YC-19 |
| YP-12L-11 | YP-16L | YP-26B | YP-33L | YP-61A | YP-112 | / | YC-12GLR | YC-20 |
| YP-12L-12 | YP-16H | YP-26C | YP-33P | YP-62 | YP-113 | / | YC-12GLR+E | YC-20D1 |
| YP-12L-13 | YP-16HL | YP-26H | YP-33P-1 | YP-63 | YP-352 | / | YC-12GL-3 | YC-20L |
| YP-12L-14 | YP-16C | YP-27 | YP-33P-2 | YP-64 | / | / | YC-12HL | YC-20LR |
| YP-12R | YP-12R-1 | YP-17S | YP-18S | YP-65 | / | / | YC-13 | YC-21 |
| YC-21A | YD-07 | YL-0213 | YL-2112 | YL-3213W | YL-3561 | YL-6112L | YL-212B | HBL2811 |
| YC-21L | YD-09 | YL-0222 | YL-2112L | YL-3214 | YL-3613 | YL-6113L | YL-3214L | HBL2821 |
| YC-21F | YD-10 | YL-0312 | YL-2113 | YL-3215 | YL-3613A | YL-6114L | / | L630-P |
| YC-22 | YD-11 | YL-0314 | YL-2113A | YL-321515 | YL-3613L | YL-6115L | / | CS8365 |
| YC-23 | YD-12 | YL-0315 | YL-2113L | YL-3215C | YL-3621 | YL-6115C | / | L1530-P |
| YC-24 | YD-13 | YL-03A18 | YL-2121 | YL-3215A | YL-3621L | YL-6118 | / | HBL2621 |
| YC-25 | YD-14 | YL-0323 | YL-2121L | YL-3215L | YL-3622 | YL-6121L | / | CS8365C |
| YC-25L | YD-15 | YL-0412 | YL-2121A | YL-3215L-1 | YL-3622L | YL-6122L | / | HBL2721 |
| YC-25E | YD-16 | YL-0414 | YL-2135 | YL-3217 | YL-3918 | YL-6123 | / | ME460P9W |
| YC-34D | YD-17 | YL-0415 | YL-2161 | YL-3218 | YL-4500 | YL-6135 | / | C532P6S |
| YC-35 | YD-17A | YL-0423 | YL-21K12 | YL-3220 | YL-4512 | YL-6145 | / | L2130-P |
| YC-41A | YD-17B | YL-0512 | YL-21K13 | YL-3223 | YL-4514 | YL-6146 | / | WALTHER-230 |
| YC-45 | YD-17L | YL-1113 | YL-21K14 | YL-3224 | YL-4515 | YL-8013 | / | WALTHER-269 |
| YC-46 | YD-18 | YL-1113A | YL-21K15 | YL-3225 | YL-4523 | YL-8013L | / | WALTHER-261 |
| YC-52 | YD-19 | YL-1113L | YL-21K21 | YL-3212L-2 | YL-4535 | YL-8015 | / | QX4 |
| YC-52A | YD-21 | YL-1113B | YL-21K21L | YL-3212L-3 | YL-4546 | YL-8021 | / | PS460P9W |
| YC-53 | YD-22 | YL-1113C | YL-21K22 | YL-3312 | YL-4600 | YL-8022 | / | QX3 |
| YC-54 | YD-23 | YL-1113BL | YL-21K23 | YL-3312L | YL-4612 | YL-8023 | / | C563P6W |
| YC-55 | YD-24 | YL-1122 | YL-21K35 | YL-3312L-1 | YL-4614 | YL-8035 | / | CS8365L |
| YC-55A | YD-25 | YL-1122L | YL-2212 | YL-3312L-2 | YL-4615 | YL-8046 | / | WALTHER-261306 |
| YC-56 | YD-26 | YL-1161 | YL-2212L | YL-3312L-3 | YL-4615F | YL-8100 | / | / |
| YC-58 | YD-27 | YL-1200 | YL-2212LA | YL-331212 | YL-4623F | YL-8113 | / | / |
| YC-59 | YD-28 | YL-1212 | YL-2214 | YL-3313 | YL-4623 | YL-8115 | / | / |
| YC-61 | YD-29 | YL-121212 | YL-2215 | YL-3314 | YL-4645 | YL-8121 | / | / |
| YC-61A | YD-30 | YL-1212L | YL-2215L | YL-3315 | YL-4821 | YL-8122 | / | / |
| YC-62 | YD-31 | YL-1212L-1 | YL-2215A | YL-3317 | YL-4823 | YL-8123 | / | / |
| YC-64 | YD-32 | YL-1212L-3 | YL-2215C | YL-331717 | YL-5216 | YL-9149 | / | / |
| YC-73L | YD-33 | YL-1214 | YL-2203 | YL-3317L | YL-5253 | YL-915 | / | / |

| | | | | | | | | |
|----------|---------|------------|-----------|------------|----------|---------|---|---|
| YC-75L | YD-36 | YL-1214L | YL-2245 | YL-3317L-1 | YL-5316 | YL-915A | / | / |
| YC-77 | YD-37 | YL-1214G | YL-2246 | YL-3318 | YL-5352 | YL-915B | / | / |
| YC-77A | YD-38 | YL-1214W | YL-2300 | YL-3318L | YL-5517 | YL-915C | / | / |
| YC-79 | YD-39 | YL-1217 | YL-2300A | YL-331818 | YL-5556 | YL-916 | / | / |
| YC-79A | YD-42 | YL-121717 | YL-2300B | YL-3318L-1 | YL-5617 | YL-921 | / | / |
| YC-91L | SR 系列 | YL-1217L | YL-2300C | YL-3318L-2 | YL-5655 | YL-921A | / | / |
| YC-92L | YCM-001 | YL-1217L-1 | YL-2300L | YL-3318L-3 | YL-6012 | YL-921B | / | / |
| YC-93L | YCM-002 | YL-1218 | YL-2318 | YL-3320 | YL-6012L | YL-223 | / | / |
| YC-12L | YCM-003 | YL-1223 | YL-2361 | YL-3325 | YL-6013 | YL-935 | / | / |
| YC-12S | YCM-004 | YL-1235 | YL-2600 | YL-3323 | YL-6013L | YL-939 | / | / |
| YC-12Y | YCM-005 | YL-1245 | YL-2615 | YL-3324 | YL-6014 | YL-323 | / | / |
| YC-12T | / | YL-1246 | YL-2622 | YL-3412 | YL-6014L | YL-661 | / | / |
| YC-12SL | / | YL-1249 | YL-2623 | YL-3413 | YL-6015 | YL-515 | / | / |
| YC-12E | / | YL-1255 | YL-2661 | YL-3413A | YL-6015L | YL-312 | / | / |
| YC-12LR | / | YL-1256 | YL-27B17 | YL-3415 | YL-6021 | YL-315 | / | / |
| YC-15B | / | YL-1258 | YL-3112 | YL-3512 | YL-6021L | YL-344 | / | / |
| YC-23A-1 | / | YL-1261 | YL-3113L | YL-3512L | YL-6022 | YL-212 | / | / |
| YC-24A-1 | / | YL-1623 | YL-3114 | YL-3514 | YL-6022L | YL-150 | / | / |
| YC-23A | / | YL-1653 | YL-3212 | YL-3514L | YL-6023 | YL-150A | / | / |
| YC-24A | / | YL-1756 | YL-3212L | YL-3515 | YL-6035 | YL-521 | / | / |
| YC-12G+E | / | YL-1800 | YL-321212 | YL-3522 | YL-6100 | YL-521W | / | / |
| / | / | YL-1861 | YL-3213 | YL-3523 | YL-6114 | YL-3200 | / | / |
| / | / | YL-1923 | YL-3213A | YL-3546 | YL-6115 | YL-3400 | / | / |

Client Reference Photo (Non-tested sample)

013



Statement:

1. The Appendix Information was/were provided by the applicant who should be responsible for the authenticity which CTI hasn't verified.
2. The Appendix Information is/are the supplement(s) for the Report A2220469647102.